

Recombinant Human LAMP2 Protein, His-tagged

Cat. No. LAMP2-4418H Lot. No. (See product label)

SPECIFICATION

Product Overview	Recombinant Human LAMP2 protein(Leu29-Ile375), fused with C-terminal His tag, was expressed in HEK293.
Species	Human
Source	HEK293
ProteinLength	Leu29-Ile375
Tag	C-His
Form	Liquid in sterile PBS, pH7.4.
Molecular Mass	The protein has a calculated MW of 40 kDa.
Endotoxin	<1.0EU per 1µg (determined by the LAL method).
Purity	> 90 % as determined by SDS-PAGE.
Storage	Store it under sterile conditions at -80°C. It is recommended that the protein be aliquoted for optimal storage. Avoid repeated freeze-thaw cycles.
Concentration	1.0 mg/ml.
Reconstitution	Centrifuge the vial at 4°C before opening to recover the entire contents.

 Tel: 1-631-559-9269 1-516-512-3133

 Email: info@creative-biomart.com  Fax: 1-631-938-8127

 45-1 Ramsey Road, Shirley, NY 11967, USA

AA Sequence

LELNLTDSENATCLYAKWQMNFTVRYETTnkTYKTVTISDHGTVTYNGSICGDDQN
 GPKIAVQFGPGFSWIANFTKAASTYSIDSVSFSYNTGDNTTFPDAEDKGILTVDELLAI
 RIPLNDLFRCNLSLSTLEKNDVVQHYWDVLVQAFVQNGTVSTNEFLCDKDKTSTVAPT
 IHTTVPSPTTTTPKEKPEAGTYSVNNGNDTCLLATMGLQLNITQDKVASVININPNTT
 HSTGSCRSHALLRLNSSTIKYLDVFVAVKNENRFYLKEVNISMVYLVNGSVFSIANN
 LSYWDAPLGSSYMCNKEQTVSVSGAFQINTFDLRVQPFNVTTQGGKYSTAQECSLDD
 DTIAHHHHHHHHHH

GENE INFORMATION

Gene Name [LAMP2 lysosomal-associated membrane protein 2 \[Homo sapiens \]](#)

Official Symbol [LAMP2](#)

Synonyms

LAMP2; lysosomal-associated membrane protein 2; lysosome-associated membrane glycoprotein 2; CD107b; CD107 antigen-like family member B; lysosome-associated membrane protein 2; LAMPB; LAMP-2; LGP110;

Gene ID [3920](#)

mRNA Refseq [NM_001122606](#)

Protein Refseq [NP_001116078](#)

MIM [309060](#)

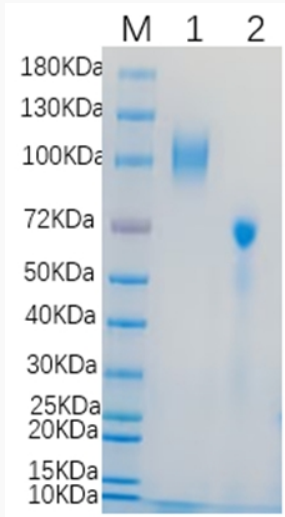
UniProt ID [P13473](#)

 Tel: 1-631-559-9269 1-516-512-3133

 Email: info@creative-biomart.com  Fax: 1-631-938-8127

 45-1 Ramsey Road, Shirley, NY 11967, USA

SDS-PAGE



 Tel: 1-631-559-9269 1-516-512-3133

 Email: info@creative-biomart.com  Fax: 1-631-938-8127

 45-1 Ramsey Road, Shirley, NY 11967, USA