

Recombinant Human LAMP2 Protein, Myc/DDK-tagged, C13 and N15-labeled

Cat. No. LAMP2-5886H Lot. No. (See product label)

SPECIFICATION

Product Overview

LAMP2 MS Standard C13 and N15-labeled recombinant protein (NP_001116078) with a C-terminal MYC/DDK tag, was expressed in HEK293 cells.

Species

Human

Source

HEK293

Description

The protein encoded by this gene is a member of a family of membrane glycoproteins. This glycoprotein provides selectins with carbohydrate ligands. It may play a role in tumor cell metastasis. It may also function in the protection, maintenance, and adhesion of the lysosome. Alternative splicing of this gene results in multiple transcript variants encoding distinct proteins.

Molecular Mass

45.17 kDa

AA Sequence

MVCFRLFPVPGSGLVLVCLVLGAVRSYALELNLTDSENATCLYAKWQMNFTVRYET
 TNKTYKTVTISDHGTVTYNGSICGDDQNGPKIAVQFGPGFSWIANFTKAASTYSIDSV
 SFSYNTGDNTTFPDAEDKGILTVDELLAIRIPLNDFRCNSLSTLEKNDVVQHYWDVL
 VQAFVQNGTVSTNEFLCDKDKTSTVAPTIHTTVPSPTTTPKEKPEAGTYSVNNGN
 DTCLLATMGLQLNITQDKVASVININPNTTHSTGSCRSHALLRLNSSTIKYLDFVFAV
 KNENRFYLKEVNISMVYLVNGSVFSIANNNLSYWDAPLGSSYMCNKEQTVSVSGAFQI
 NTFDLRVQPFNVTQGKYSTAECSADSDLNFLIPVAVGVALGFLIIVVFISYMIGRRKS
 RTGYQSVTRTRPLEQKLISEEDLAANDILDYKDDDDKV

 Tel: 1-631-559-9269 1-516-512-3133

 Email: info@creative-biomart.com  Fax: 1-631-938-8127

 45-1 Ramsey Road, Shirley, NY 11967, USA

Purity	> 80% as determined by SDS-PAGE and Coomassie blue staining
Stability	Stable for 3 months from receipt of products under proper storage and handling conditions.
Storage	Store at -80 centigrade. Avoid repeated freeze-thaw cycles.
Concentration	50 µg/mL as determined by BCA
Storage Buffer	100 mM glycine, 25 mM Tris-HCl, pH 7.3.

GENE INFORMATION

Gene Name	LAMP2 lysosomal-associated membrane protein 2 [Homo sapiens (human)]
Official Symbol	LAMP2
Synonyms	LAMP2; lysosomal-associated membrane protein 2; lysosome-associated membrane glycoprotein 2; CD107b; CD107 antigen-like family member B; lysosome-associated membrane protein 2; LAMPB; LAMP-2; LGP110;
Gene ID	3920
mRNA Refseq	NM_001122606
Protein Refseq	NP_001116078
MIM	309060
UniProt ID	P13473

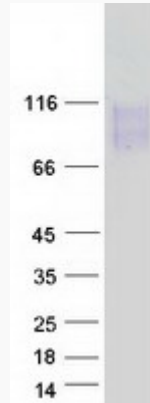
 Tel: 1-631-559-9269 1-516-512-3133

 Email: info@creative-biomart.com  Fax: 1-631-938-8127

 45-1 Ramsey Road, Shirley, NY 11967, USA



SDS-PAGE



☎ Tel: 1-631-559-9269 1-516-512-3133

☎ Email: info@creative-biomart.com ☎ Fax: 1-631-938-8127

☎ 45-1 Ramsey Road, Shirley, NY 11967, USA