

Recombinant Human LAMP2 protein, His & GST-tagged

Cat. No. LAMP2-6992H Lot. No. (See product label)

SPECIFICATION

Product Overview	Recombinant Human LAMP2 aa. (Lys193~Asn375 (Accession # P13473)) fused with N-terminal His & GST tag was produced in E. coli cells.
Species	Human
Source	E.coli
ProteinLength	Lys193~Asn375
Description	The protein encoded by this gene is a member of a family of membrane glycoproteins. This glycoprotein provides selectins with carbohydrate ligands. It may play a role in tumor cell metastasis. It may also function in the protection, maintenance, and adhesion of the lysosome. Alternative splicing of this gene results in multiple transcript variants encoding distinct proteins.
Form	Freeze-dried powder
Molecular Mass	50kDa as determined by SDS-PAGE reducing conditions.
Endotoxin	<1.0EU per 1ug (determined by the LAL method)
Purity	>95%
Characteristic	The isoelectric point is 6.4.

 Tel: 1-631-559-9269 1-516-512-3133

 Email: info@creative-biomart.com  Fax: 1-631-938-8127

 45-1 Ramsey Road, Shirley, NY 11967, USA

Applications	Positive Control; Immunogen; SDS-PAGE; WB
Stability	The thermal stability is described by the loss rate. The loss rate was determined by accelerated thermal degradation test, that is, incubate the protein at 37°C for 48h, and no obvious degradation and precipitation were observed. The loss rate is less than 5% within the expiration date under appropriate storage condition.
Storage	Avoid repeated freeze/thaw cycles. Store at 2-8°C for one month. Aliquot and store at -80°C for 12 months.
Concentration	200ug/mL
Storage buffer	20mM Tris, 150mM NaCl, pH8.0, containing 1mM EDTA, 1mM DTT, 0.01% sarcosyl, 5%Trehalose and Proclin300.
Reconstitution	Reconstitute in 20mM Tris, 150mM NaCl (pH8.0) to a concentration of 0.1-1.0 mg/mL. Do not vortex.

GENE INFORMATION

Gene Name	LAMP2 lysosomal associated membrane protein 2 [Homo sapiens (human)]
Official Symbol	LAMP2
Synonyms	LAMP2; lysosomal associated membrane protein 2; LAMPB; CD107b; LAMP-2; LGP-96; LGP110; lysosome-associated membrane glycoprotein 2; CD107 antigen-like family member B
Gene ID	3920
mRNA Refseq	NM_001122606.1

 Tel: 1-631-559-9269 1-516-512-3133

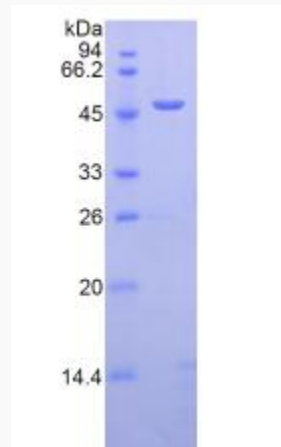
 Email: info@creative-biomart.com  Fax: 1-631-938-8127

 45-1 Ramsey Road, Shirley, NY 11967, USA

Protein Refseq NP_001116078.1

UniProt ID P13473

SDS-PAGE



 Tel: 1-631-559-9269 1-516-512-3133

 Email: info@creative-biomart.com  Fax: 1-631-938-8127

 45-1 Ramsey Road, Shirley, NY 11967, USA