

Recombinant Human LAMP3 Protein (Lys28-Thr381), C-His tagged

Cat. No. LAMP3-4192H Lot. No. (See product label)

SPECIFICATION

| | |
|-------------------------|---|
| Product Overview | Recombinant human LAMP3 (Lys28-Thr381) fused with the C-terminal His tag was expressed in Mammalian cells. |
| Species | Human |
| Source | Mammalian Cells |
| ProteinLength | Lys28-Thr381 |
| Form | Lyophilized powder/frozen liquid |
| Molecular Mass | 38.94 kDa |
| Endotoxin | < 1.0 EU/μg of the protein as determined by the LAL method. |
| Purity | >90% as determined by SDS-PAGE. |
| Notes | For research use only. |
| Storage | Use a manual defrost freezer and avoid repeated freeze thaw cycles. Store at 2 to 8 centigrade for one week. Store at -20 to -80 centigrade for twelve months from the date of receipt. |
| Storage Buffer | Supplied as solution form in PBS or lyophilized from PBS. |

 Tel: 1-631-559-9269 1-516-512-3133

 Email: info@creative-biomart.com  Fax: 1-631-938-8127

 45-1 Ramsey Road, Shirley, NY 11967, USA

Reconstitution Reconstitute in sterile water for a stock solution.

Shipping They are shipped out with dry ice/blue ice unless customers require otherwise.

GENE INFORMATION

Gene Name LAMP3 lysosomal-associated membrane protein 3 [Homo sapiens (human)]

Official Symbol LAMP3

Synonyms LAMP3; lysosomal-associated membrane protein 3; lysosome-associated membrane glycoprotein 3; CD208; DC LAMP; DCLAMP; LAMP; TSC403; DC-lysosome-associated membrane glycoprotein; LAMP-3; DC-LAMP;

Gene ID 27074

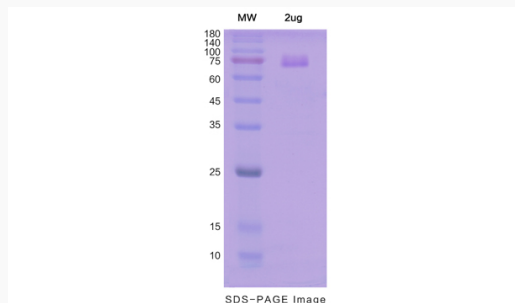
mRNA Refseq NM_014398

Protein Refseq NP_055213

MIM 605883

UniProt ID Q9UQV4

SDS-PAGE



 Tel: 1-631-559-9269 1-516-512-3133

 Email: info@creative-biomart.com  Fax: 1-631-938-8127

 45-1 Ramsey Road, Shirley, NY 11967, USA