

Recombinant Human LANCL1 Protein, Myc/DDK-tagged, C13 and N15-labeled

Cat. No. LANCL1-3164H **Lot. No.** (See product label)

SPECIFICATION

Product Overview	LANCL1 MS Standard C13 and N15-labeled recombinant protein (NP_001130046) with a C-terminal MYC/DDK tag, was expressed in HEK293 cells.
Species	Human
Source	HEK293
Description	This gene encodes a loosely associated peripheral membrane protein related to the LanC family of bacterial membrane-associated proteins involved in the biosynthesis of antimicrobial peptides. This protein may play a role as a peptide-modifying enzyme component in eukaryotic cells. Previously considered a member of the G-protein-coupled receptor superfamily, this protein is now in the LanC family. Multiple alternatively spliced variants, encoding the same protein, have been identified.
Molecular Mass	45.3 kDa
AA Sequence	MAQRAFPNPYADYNKSLAEGYFDAAGRLTPEFSQRLTNKIRELLQQMERGLKSADP RDGTGYTGWAGIAVLYLHLYDVFGDPAYLQLAHGYVKQSLNCLTKRSITFLCGDAGP LAVAAVLYHKMNNEKQAEDCITRLIHLNKIDPHAPNEMLYGRIGYIYALLFVNKNFGVE KIPQSHIQQICETILTSGENLARKRNFTAKSPLMYEWYQEYYVGAHGLAGIYYYYLMQ PSLQVSQGLHSLVKPSVDYVCQLKFPSPNYPPCIGDNRDLLVHWCHGAPGVIYMLI QAYKVFREEKYLCDAYQCADVIWQYGLLKKGYGLCHGSAGNAYAFLLYNTQDMK YLYRACKFAEWCLEYGEHGCRTPDTPFSLFEGMAGTIYFLADLLVPTKARFPAPFLT

 Tel: 1-631-559-9269 1-516-512-3133

 Email: info@creative-biomart.com  Fax: 1-631-938-8127

 45-1 Ramsey Road, Shirley, NY 11967, USA

RTRPLEQKLISEEDLAANDILDYKDDDDKV

Purity > 80% as determined by SDS-PAGE and Coomassie blue staining

Stability Stable for 3 months from receipt of products under proper storage and handling conditions.

Storage Store at -80 centigrade. Avoid repeated freeze-thaw cycles.

Concentration 50 µg/mL as determined by BCA

Storage Buffer 100 mM glycine, 25 mM Tris-HCl, pH 7.3.

GENE INFORMATION

Gene Name [LANCL1 LanC like 1 \[Homo sapiens \(human\) \]](#)

Official Symbol [LANCL1](#)

Synonyms LANCL1; LanC lantibiotic synthetase component C-like 1 (bacterial); GPR69A, LanC (bacterial lantibiotic synthetase component C) like 1; lanC-like protein 1; p40; G protein-coupled receptor 69A; 40 kDa erythrocyte membrane protein; LanC (bacterial lantibiotic synthetase component); LanC (bacterial lantibiotic synthetase component C)-like 1; GPR69A;

Gene ID [10314](#)

mRNA Refseq [NM_001136574](#)

Protein Refseq [NP_001130046](#)

 Tel: 1-631-559-9269 1-516-512-3133

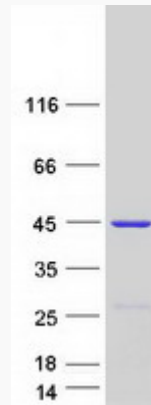
 Email: info@creative-biomart.com  Fax: 1-631-938-8127

 45-1 Ramsey Road, Shirley, NY 11967, USA

MIM 604155

UniProt ID O43813

SDS-PAGE



 Tel: 1-631-559-9269 1-516-512-3133

 Email: info@creative-biomart.com  Fax: 1-631-938-8127

 45-1 Ramsey Road, Shirley, NY 11967, USA