

# Active Recombinant Full Length Human LAP3 Protein, C-Flag-tagged

Cat. No. LAP3-108HFL Lot. No. (See product label)

## SPECIFICATION

### Product Overview

Recombinant Full Length Human LAP3 Protein, fused to Flag-tag at C-terminus, was expressed in Mammalian cells.

### Species

Human

### Source

Mammalian Cells

### Description

Presumably involved in the processing and regular turnover of intracellular proteins. Catalyzes the removal of unsubstituted N-terminal amino acids from various peptides.

### Form

25 mM Tris HCl, pH 7.3, 100 mM glycine, 10% glycerol.

### Bio-activity

LAP3 activity verified in a biochemical assay: Leucine aminopeptidase 3 (LAP3, TP309052) activity was measured in a fluorescent biochemical assay. LAP3 catalyzes the removal of unsubstituted N-terminal amino acids from various peptides and is most active on leucine. LAP3 activity was measured in a 100  $\mu$ reaction mixture containing 1 mM L-leucine 7-amido-4-methyl coumarin (Leu-AMC), 50 mM Tris, pH 8.0, 4 mM MgCl<sub>2</sub>, and 1 mM MnCl<sub>2</sub>. Cleavage of leucine from the AMC moiety results in a strong increase in fluorescence intensity. Fluorescence was measured over time with an excitation wavelength of 380 nm and an emission wavelength of 460 nm. The activity of the enzyme in this system remained constant over six hours.

### Molecular Mass

56 kDa

 Tel: 1-631-559-9269 1-516-512-3133

 Email: [info@creative-biomart.com](mailto:info@creative-biomart.com)  Fax: 1-631-938-8127

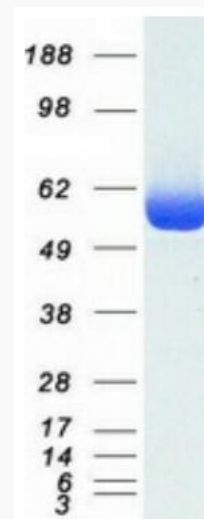
 45-1 Ramsey Road, Shirley, NY 11967, USA

<b>AA Sequence</b>	<p>MFLLPLPAAGR VVRRRLAVRRFGSRSLSTADMTKGLVLGIYSKEKEDDVPQFTSAGE  NFDKLLAGKLRET LNISGPPLKAGKTRTFYGLHQDFPSVVLVGLGKKAAGIDEQEN  WHEGKENIRA AAVAAGCRQIQDLELSSV EVDPCGDAQAAAEGAVLGLYEYDDLKQK  KKMAVS AKLYGSGDQEA WQKGVLFASGQNLARQLMETPANEM TPTRFAEIIIEKNLK  SASSKTEVHIRPKSWIEEQAMGSFLSVAKGSDEPPVFLEIHYKGS PNANEPPLVFV G  KGITFDSSGGISIKASANMDLMRADMGGAATCSAIVSAAKLNLPINIIGLAPLCENMPS  GKANKPGDVV RAKNGKTIQVDNTDAEGR LILADALCYAHTFNP KILNAATLTGAMD  VALGSGATGVFTNSSWLWNK LFE ASIETGDRVWRMPLFEHYTRQVVDCQLADVNN  IGKYRSAGACTAA AFLKEFVTHPKWAHLDIAGVMTNKD  EVPYLRKGMTGRPRTRTLIEFLRFSQDNATRTRPLEQKLISEEDLAANDILDYKDDDD  KV</p>
<b>Purity</b>	> 80% as determined by SDS-PAGE and Coomassie blue staining.
<b>Stability</b>	Stable for 12 months from the date of receipt of the product under proper storage and handling conditions. Avoid repeated freeze-thaw cycles.
<b>Storage</b>	Store at -80 centigrade.
<b>Concentration</b>	>50 ug/mL as determined by microplate BCA method.
<b>Preparation</b>	Recombinant protein was captured through anti-DDK affinity column followed by conventional chromatography steps.
<b>Protein Families</b>	Druggable Genome, Protease
<b>Protein Pathways</b>	Arginine and proline metabolism, Glutathione metabolism, Metabolic pathways
<b>Full Length</b>	Full L.

 Tel: 1-631-559-9269 1-516-512-3133

 Email: [info@creative-biomart.com](mailto:info@creative-biomart.com)  Fax: 1-631-938-8127

 45-1 Ramsey Road, Shirley, NY 11967, USA

**GENE INFORMATION****Gene Name** LAP3 leucine aminopeptidase 3 [ Homo sapiens (human) ]**Official Symbol** LAP3**Synonyms** LAP; PEPS; LAPEP; HEL-S-106**Gene ID** 51056**mRNA Refseq** NM\_015907.3**Protein Refseq** NP\_056991.2**MIM** 170250**UniProt ID** P28838 Tel: 1-631-559-9269 1-516-512-3133 Email: [info@creative-biomart.com](mailto:info@creative-biomart.com)  Fax: 1-631-938-8127 45-1 Ramsey Road, Shirley, NY 11967, USA



Coomassie blue staining of purified LAP3 protein.

 Tel: 1-631-559-9269 1-516-512-3133

 Email: [info@creative-biomart.com](mailto:info@creative-biomart.com)  Fax: 1-631-938-8127

 45-1 Ramsey Road, Shirley, NY 11967, USA