

# Recombinant Full Length Human leucine aminopeptidase 3 Protein, His tagged

Cat. No. LAP3-20HFL Lot. No. (See product label)

## SPECIFICATION

<b>Product Overview</b>	Recombinant human LAP3 (1-519 aa), fused to Histag at N-terminus, was expressed in E. coli and purified by using conventional chromatography techniques.
<b>Species</b>	Human
<b>Source</b>	E.coli
<b>ProteinLength</b>	1-519 aa
<b>Description</b>	Predicted to enable peptidase activity. Predicted to be involved in proteolysis. Located in several cellular components, including extracellular exosome; focal adhesion; and mitochondrion.
<b>Tag</b>	N-His
<b>Form</b>	Liquid
<b>Molecular Mass</b>	58.3 kDa (539aa)
<b>AA Sequence</b>	
<b>Purity</b>	> 85% by SDS-PAGE
<b>Storage</b>	Can be stored at +2 to +8 centigrade for 1 week. For long term storage, aliquot and

 Tel: 1-631-559-9269 1-516-512-3133

 Email: [info@creative-biomart.com](mailto:info@creative-biomart.com)  Fax: 1-631-938-8127

 45-1 Ramsey Road, Shirley, NY 11967, USA

store at -20 to -80 centigrade. Avoid repeated freezing and thawing cycles.

**Storage Buffer** 20mM Tris-HCl buffer (pH 8.5) containing 50% glycerol, 5mM DTT, 1mM EDTA

**Concentration** 0.5 mg/mL (determined by Bradford assay)

**Reference** 1. Hendrickson SL.,et al. (2010) PLoS ONE 5 (9), E12862.

## GENE INFORMATION

**Gene Name** LAP3 leucine aminopeptidase 3 [ Homo sapiens (human) ]

**Official Symbol** LAP3

**Synonyms** LAP3; leucine aminopeptidase 3; PEPS, peptidase S; cytosol aminopeptidase; LAP; LAPEP; LAP-3; peptidase S; leucyl aminopeptidase; prolyl aminopeptidase; proline aminopeptidase; PEPS

**Gene ID** 51056

**mRNA Refseq** NM\_015907

**Protein Refseq** NP\_056991

**MIM** 170250

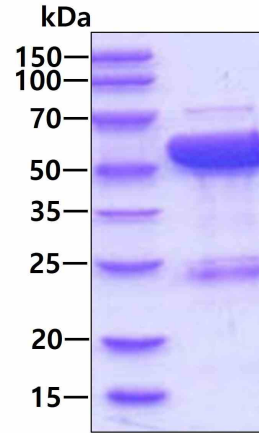
**UniProt ID** P28838

 Tel: 1-631-559-9269 1-516-512-3133

 Email: [info@creative-biomart.com](mailto:info@creative-biomart.com)  Fax: 1-631-938-8127

 45-1 Ramsey Road, Shirley, NY 11967, USA

**3 µg by SDS-PAGE**  
under reducing  
condition and  
visualized by  
coomassie blue  
stain.



 Tel: 1-631-559-9269 1-516-512-3133

 Email: [info@creative-biomart.com](mailto:info@creative-biomart.com)  Fax: 1-631-938-8127

 45-1 Ramsey Road, Shirley, NY 11967, USA