

Recombinant Human LAP3 protein, His & T7-tagged

Cat. No. LAP3-2759H Lot. No. (See product label)

SPECIFICATION

Product Overview	Recombinant Human LAP3 aa. (Ala320~Ala519 (Accession # P28838)) fused with N-terminal His & T7 tag was produced in E. coli cells.
Species	Human
Source	E.coli
ProteinLength	Ala320~Ala519
Form	Freeze-dried powder
Molecular Mass	Predicted Molecular Mass: 25.4kDa
Endotoxin	<1.0EU per 1g (determined by the LAL method)
Purity	>95%
Characteristic	The isoelectric point is 9.1.
Applications	SDS-PAGE; WB; ELISA; IP.
Stability	The thermal stability is described by the loss rate. The loss rate was determined by accelerated thermal degradation test, that is, incubate the protein at 37°C for 48h, and no obvious degradation and precipitation were observed. The loss rate is less than 5% within the expiration date under appropriate storage condition.

 Tel: 1-631-559-9269 1-516-512-3133

 Email: info@creative-biomart.com  Fax: 1-631-938-8127

 45-1 Ramsey Road, Shirley, NY 11967, USA

Storage	Avoid repeated freeze/thaw cycles. Store at 2-8°C for one month. Aliquot and store at -80°C for 12 months.
Storage buffer	Supplied as lyophilized form in PBS, pH7.4, containing 5% sucrose, 0.01% sarcosyl.
Reconstitution	Reconstitute in sterile PBS, pH7.2-pH7.4.

GENE INFORMATION

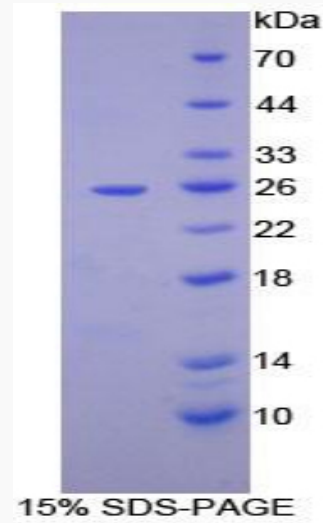
Gene Name	LAP3 leucine aminopeptidase 3 [Homo sapiens (human)]
Official Symbol	LAP3
Synonyms	LAP; PEPS; LAPEP; HEL-S-106; LAP-3; epididymis secretory protein Li 106; leucyl aminopeptidase; peptidase S; proline aminopeptidase; prolyl aminopeptidase; cytosol aminopeptidase
Gene ID	51056
mRNA Refseq	NM_015907.2
Protein Refseq	NP_056991.2
UniProt ID	P28838

 Tel: 1-631-559-9269 1-516-512-3133

 Email: info@creative-biomart.com  Fax: 1-631-938-8127

 45-1 Ramsey Road, Shirley, NY 11967, USA

SDS-PAGE



 Tel: 1-631-559-9269 1-516-512-3133

 Email: info@creative-biomart.com  Fax: 1-631-938-8127

 45-1 Ramsey Road, Shirley, NY 11967, USA