

Recombinant Human LAP3 Protein (Ala320-Ala519), N-His tagged

Cat. No. LAP3-4809H Lot. No. (See product label)

SPECIFICATION

Product Overview	Recombinant human LAP3 (Ala320-Ala519) fused with the N-His tag was expressed in E. coli.
Species	Human
Source	E.coli
ProteinLength	Ala320-Ala519
Form	Lyophilized powder/frozen liquid
Molecular Mass	24.20 kDa
Purity	>90% as determined by SDS-PAGE.
Notes	For research use only.
Storage	Use a manual defrost freezer and avoid repeated freeze thaw cycles. Store at 2 to 8 centigrade for one week. Store at -20 to -80 centigrade for twelve months from the date of receipt.
Storage Buffer	0.01M PBS, pH 7.4, 0.02% NLS
Reconstitution	Reconstitute in sterile water for a stock solution.

 Tel: 1-631-559-9269 1-516-512-3133

 Email: info@creative-biomart.com  Fax: 1-631-938-8127

 45-1 Ramsey Road, Shirley, NY 11967, USA

Shipping They are shipped out with dry ice/blue ice unless customers require otherwise.

GENE INFORMATION

Gene Name LAP3 leucine aminopeptidase 3 [Homo sapiens (human)]

Official Symbol LAP3

Synonyms LAP3; leucine aminopeptidase 3; PEPS, peptidase S; cytosol aminopeptidase; LAP; LAPEP; LAP-3; peptidase S; leucyl aminopeptidase; prolyl aminopeptidase; proline aminopeptidase; PEPS;

Gene ID 51056

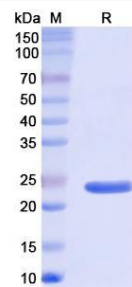
mRNA Refseq NM_015907

Protein Refseq NP_056991

MIM 170250

UniProt ID P28838

SDS-PAGE



 Tel: 1-631-559-9269 1-516-512-3133

 Email: info@creative-biomart.com  Fax: 1-631-938-8127

 45-1 Ramsey Road, Shirley, NY 11967, USA