

# Recombinant Human LAP3 Protein, Myc/DDK-tagged, C13 and N15-labeled

**Cat. No.** LAP3-6057H    **Lot. No.** (See product label)

## SPECIFICATION

<b>Product Overview</b>	LAP3 MS Standard C13 and N15-labeled recombinant protein (NP_056991) with a C-terminal MYC/DDK tag, was expressed in HEK293 cells.
<b>Species</b>	Human
<b>Source</b>	HEK293
<b>Description</b>	Presumably involved in the processing and regular turnover of intracellular proteins. Catalyzes the removal of unsubstituted N-terminal amino acids from various peptides.
<b>Molecular Mass</b>	56.2 kDa
<b>AA Sequence</b>	<p>MFLPLPAAGR VVRR LAVRR FGS RSLSTADMTKGLV LGIYSKEKEDDVPQFTSAGE  NFDKLLAGKLRETLNISGPP LKAGKTRTFYGLHQDFPSVVLVGLGKKAAGIDEQENW  HEGKENIRA A VAAGCRQIQDLELSSVEVDPCGDAQAAAEGAVLGLYEYDDLKQKKK  MAVSAKLYGSGDQEAWQKGVLFASGQNLARQLMETPANEMTPTRFAEIIKLNKLSA  SSKTEVHIRPKSWIEEQAMGSFLSVAKGSDEPPVFLEIHYKGSPNANEPPLVFGKGI  TFDSGGISIKASANMDLMRADMGGAATCSAIVSAAKLNLPINIIGLAPLCENMPSGKA  NKPGDVVRAKNGKTIQVDNTDAEGR LILADALCYAHTFNPKVILNAATLTGAMDVAL  GSGATGVFTNSSWLWNKLF EAS IETGDRVWRMPLFEHYTRQVVDCQLADVNNIGK  YRSAGACTAA AFLKEFVTHPKWAHLDIAGVMTNKDEV PYLRKGMTGRPTRTLIEFLL  RFSQDNATRTRPLEQKLISEEDLAANDILDYKDDDDKV</p>
<b>Purity</b>	> 80% as determined by SDS-PAGE and Coomassie blue staining

 Tel: 1-631-559-9269    1-516-512-3133

 Email: [info@creative-biomart.com](mailto:info@creative-biomart.com)     Fax: 1-631-938-8127

 45-1 Ramsey Road, Shirley, NY 11967, USA

<b>Stability</b>	Stable for 3 months from receipt of products under proper storage and handling conditions.
<b>Storage</b>	Store at -80 centigrade. Avoid repeated freeze-thaw cycles.
<b>Concentration</b>	50 µg/mL as determined by BCA
<b>Storage Buffer</b>	100 mM glycine, 25 mM Tris-HCl, pH 7.3.

## GENE INFORMATION

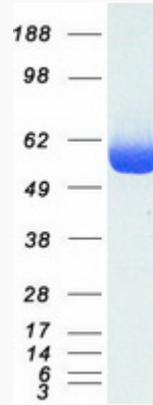
<b>Gene Name</b>	LAP3 leucine aminopeptidase 3 [ Homo sapiens (human) ]
<b>Official Symbol</b>	LAP3
<b>Synonyms</b>	LAP3; leucine aminopeptidase 3; PEPS, peptidase S; cytosol aminopeptidase; LAP; LAPEP; LAP-3; peptidase S; leucyl aminopeptidase; prolyl aminopeptidase; proline aminopeptidase; PEPS;
<b>Gene ID</b>	51056
<b>mRNA Refseq</b>	NM_015907
<b>Protein Refseq</b>	NP_056991
<b>MIM</b>	170250
<b>UniProt ID</b>	P28838

 Tel: 1-631-559-9269 1-516-512-3133

 Email: [info@creative-biomart.com](mailto:info@creative-biomart.com)  Fax: 1-631-938-8127

 45-1 Ramsey Road, Shirley, NY 11967, USA

**SDS-PAGE**



 Tel: 1-631-559-9269 1-516-512-3133

 Email: [info@creative-biomart.com](mailto:info@creative-biomart.com)  Fax: 1-631-938-8127

 45-1 Ramsey Road, Shirley, NY 11967, USA