

# Recombinant Human LAT2 Protein (Arg30-Arg203), N-His tagged

Cat. No. LAT2-5162H    Lot. No. (See product label)

## SPECIFICATION

<b>Product Overview</b>	Recombinant human LAT2 (Arg30-Arg203) fused with the N-His tag was expressed in E. coli.
<b>Species</b>	Human
<b>Source</b>	E.coli
<b>ProteinLength</b>	Arg30-Arg203
<b>Form</b>	Lyophilized powder/frozen liquid
<b>Molecular Mass</b>	21.78 kDa
<b>Purity</b>	>90% as determined by SDS-PAGE.
<b>Notes</b>	For research use only.
<b>Storage</b>	Use a manual defrost freezer and avoid repeated freeze thaw cycles. Store at 2 to 8 centigrade for one week. Store at -20 to -80 centigrade for twelve months from the date of receipt.
<b>Storage Buffer</b>	0.01M PBS, pH 7.4, 0.02% NLS
<b>Reconstitution</b>	Reconstitute in sterile water for a stock solution.

 Tel: 1-631-559-9269    1-516-512-3133

 Email: [info@creative-biomart.com](mailto:info@creative-biomart.com)     Fax: 1-631-938-8127

 45-1 Ramsey Road, Shirley, NY 11967, USA

**Shipping** They are shipped out with dry ice/blue ice unless customers require otherwise.

## GENE INFORMATION

**Gene Name** LAT2 linker for activation of T cells family, member 2 [ Homo sapiens (human) ]

**Official Symbol** LAT2

**Synonyms**

LAT2; linker for activation of T cells family, member 2; WBSCR5, WBSCR15, Williams Beuren syndrome chromosome region 5; linker for activation of T-cells family member 2; HSPC046; LAB; linker for activation of B cells; linker for activation of T cells; transmembrane adaptor 2; non T cell activation linker; NTAL; WSCR5; non-T-cell activation linker; linker for activation of B-cells; membrane-associated adapter molecule; Williams-Beuren syndrome chromosomal region 5 protein; Williams-Beuren syndrome chromosomal region 15 protein; linker for activation of T cells, transmembrane adaptor 2; WBSCR5; WBSCR15;

**Gene ID** 7462

**mRNA Refseq** NM\_014146

**Protein Refseq** NP\_054865

**MIM** 605719

**UniProt ID** Q9GZY6

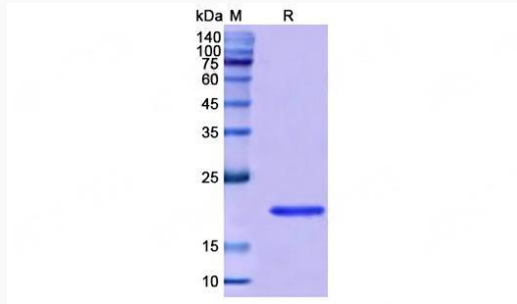
 Tel: 1-631-559-9269 1-516-512-3133

 Email: [info@creative-biomart.com](mailto:info@creative-biomart.com)  Fax: 1-631-938-8127

 45-1 Ramsey Road, Shirley, NY 11967, USA



SDS-PAGE



Tel: 1-631-559-9269 1-516-512-3133

Email: [info@creative-biomart.com](mailto:info@creative-biomart.com) Fax: 1-631-938-8127

45-1 Ramsey Road, Shirley, NY 11967, USA