

Recombinant Mouse NTAL

Cat. No. LAT2-53M Lot. No. (See product label)

SPECIFICATION

Product Overview	Expressed in E. coli. DNA sequence encoding mouse NTAL (amino acids 30 - 203) was fused with a His tag at the N-terminus.
Species	Mouse
Source	E.coli
ProteinLength	30-203 a.a.
Description	Non-T cell Activation Linker (NTAL), alternatively termed as Linker for Activation of B cells (LAB), is a 25 kDa transmembrane adaptor protein present in membrane rafts B cells, mast cells, monocytes and NK cells.
Usage	For research use only. Not for drug, diagnostic or other use.
Notes	Indicated dilutions are recommended starting points for use of this product. Working concentrations should be determined by the investigator.

GENE INFORMATION

Gene Name	<i>Lat2 linker for activation of T cells family, member 2 [Mus musculus]</i>
Official Symbol	LAT2
Synonyms	LAT2; linker for activation of T cells family, member 2; linker for activation of T-cells

 Tel: 1-631-559-9269 1-516-512-3133

 Email: info@creative-biomart.com  Fax: 1-631-938-8127

 45-1 Ramsey Road, Shirley, NY 11967, USA

family member 2; non-T cell activation linker; non-T-cell activation linker; linker for activation of B-cells; membrane-associated adapter molecule; Williams-Beuren syndrome chromosome region 5 homolog; Williams-Beuren syndrome chromosome region 15 homolog; williams-Beuren syndrome chromosomal region 15 protein homolog; LAB; NTAL; WSCR5; Wbscr5; Wbscr15; AW125574;

Gene ID [56743](#)

mRNA Refseq [NM_020044](#)

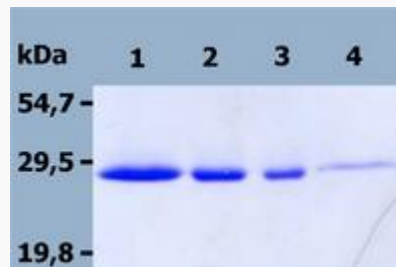
Protein Refseq [NP_064428](#)

Pathway B Cell Receptor Signaling Pathway, organism-specific biosystem;

Function SH2 domain binding;

SDS-PAGE

Electrophoresis of Recombinant Mouse NTAL .Lane 1 - 4: Recombinant Mouse NTAL . Staining with Coomassie Blue.



 Tel: 1-631-559-9269 1-516-512-3133

 Email: info@creative-biomart.com  Fax: 1-631-938-8127

 45-1 Ramsey Road, Shirley, NY 11967, USA