

Recombinant Human LBP Protein (Ala2-Ile250)

Cat. No. LBP-4419H Lot. No. (See product label)

SPECIFICATION

Product Overview	Recombinant human LBP (Ala2-Ile250) without tag was expressed in E. coli.
Species	Human
Source	E.coli
ProteinLength	Ala2-Ile250
Form	Lyophilized powder/frozen liquid
Molecular Mass	27.39 kDa
Purity	>90% as determined by SDS-PAGE.
Notes	For research use only.
Storage	Use a manual defrost freezer and avoid repeated freeze thaw cycles. Store at 2 to 8 centigrade for one week. Store at -20 to -80 centigrade for twelve months from the date of receipt.
Storage Buffer	Supplied as solution form in PBS or lyophilized from PBS.
Reconstitution	Reconstitute in sterile water for a stock solution.
Shipping	They are shipped out with dry ice/blue ice unless customers require otherwise.

 Tel: 1-631-559-9269 1-516-512-3133

 Email: info@creative-biomart.com  Fax: 1-631-938-8127

 45-1 Ramsey Road, Shirley, NY 11967, USA

GENE INFORMATION

Gene Name	LBP lipopolysaccharide binding protein [Homo sapiens (human)]
Official Symbol	LBP
Synonyms	LBP; lipopolysaccharide binding protein; lipopolysaccharide-binding protein; BPI fold containing family D; member 2; BPIFD2; LPS-binding protein; BPI fold containing family D, member 2; MGC22233;
Gene ID	3929
mRNA Refseq	NM_004139
Protein Refseq	NP_004130
MIM	151990
UniProt ID	P18428

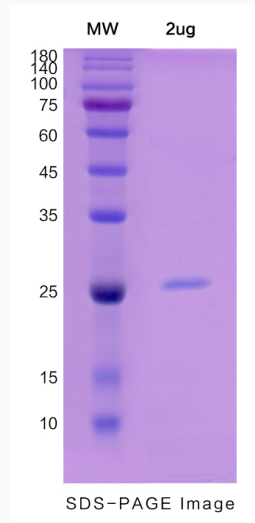
 Tel: 1-631-559-9269 1-516-512-3133

 Email: info@creative-biomart.com  Fax: 1-631-938-8127

 45-1 Ramsey Road, Shirley, NY 11967, USA



SDS-PAGE



Tel: 1-631-559-9269 1-516-512-3133

Email: info@creative-biomart.com Fax: 1-631-938-8127

45-1 Ramsey Road, Shirley, NY 11967, USA