

## Recombinant Human LCK Protein (SH3 Domain), GST tagged

Cat. No. LCK-174H Lot. No. (See product label)

### SPECIFICATION

<b>Product Overview</b>	Recombinant Human LCK Protein (SH3 Domain) with GST tag was expressed in E. coli.
<b>Species</b>	Human
<b>Source</b>	E.coli
<b>Description</b>	This gene is a member of the Src family of protein tyrosine kinases (PTKs). The encoded protein is a key signaling molecule in the selection and maturation of developing T-cells. It contains N-terminal sites for myristylation and palmitoylation, a PTK domain, and SH2 and SH3 domains which are involved in mediating protein-protein interactions with phosphotyrosine-containing and proline-rich motifs, respectively. The protein localizes to the plasma membrane and pericentrosomal vesicles, and binds to cell surface receptors, including CD4 and CD8, and other signaling molecules. Multiple alternatively spliced variants encoding different isoforms have been described.
<b>Form</b>	Lyophilized
<b>Molecular Mass</b>	The protein has a calculated MW of 33 kDa.
<b>AA Sequence</b>	MSPILGYWKIKGLVQPTRLLEYLEEKYEEHLYERDEGDKWRNKKFELGLEFPNLPY YIDGDVKLTQSMAIIRYIADKHNLGGCPKERAIEISMLEGAVLDIRYGVSR IAYSKD FE TLKVDFLSKLPEMLKMFEDRLCHKTYLNGDHVTHPDFMLYDALDVVLYMDPMCLDA FPKLVCFKKRIEAIPQIDKYLKSSKYIAWPLQGQWQATFGGGDHPPKSDLVPRGSLQD

 Tel: 1-631-559-9269 1-516-512-3133

 Email: [info@creative-biomart.com](mailto:info@creative-biomart.com)  Fax: 1-631-938-8127

 45-1 Ramsey Road, Shirley, NY 11967, USA

	NLVIALHSYEPSHDGDLGFEEKGEQLRILEQSGEWWKAQSLTTGQEGFIPFNFVAKAN S
<b>Purity</b>	> 90% by SDS-PAGE
<b>Storage</b>	Store it under sterile conditions at -20 to -80 centigrade. It is recommended that the protein be aliquoted for optimal storage. Avoid repeated freeze-thaw cycles.
<b>Storage Buffer</b>	Lyophilized from sterile 50 mM Tris, pH8.0, 200 mM NaCl, 1mM DTT, 5% Mannitol, 5% Trehalose
<b>Reconstitution</b>	It is recommended that sterile water be added to the vial to prepare a stock solution of 0.42 µg/µL. Centrifuge the vial at 4 centigrade before opening to recover the entire contents.

## GENE INFORMATION

<b>Gene Name</b>	LCK lymphocyte-specific protein tyrosine kinase [ Homo sapiens ]
<b>Official Symbol</b>	LCK
<b>Synonyms</b>	LCK; lymphocyte-specific protein tyrosine kinase; tyrosine-protein kinase Lck; leukocyte C-terminal Src kinase; p56(LSTRA) protein-tyrosine kinase; t cell-specific protein-tyrosine kinase; proto-oncogene tyrosine-protein kinase LCK; lymphocyte cell-specific protein-tyrosine kinase; T-lymphocyte specific protein tyrosine kinase p56lck; LSK; YT16; p56lck; pp58lck;
<b>Gene ID</b>	3932
<b>mRNA Refseq</b>	NM_001042771

 Tel: 1-631-559-9269 1-516-512-3133

 Email: [info@creative-biomart.com](mailto:info@creative-biomart.com)  Fax: 1-631-938-8127

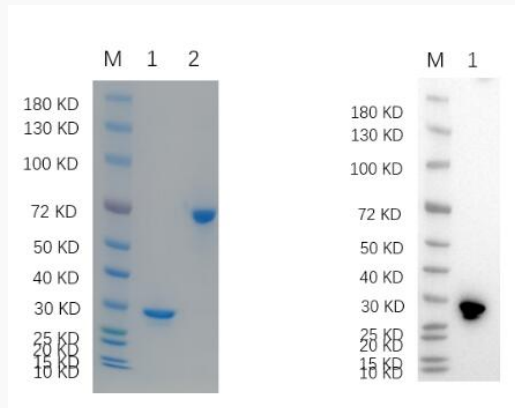
 45-1 Ramsey Road, Shirley, NY 11967, USA

**Protein Refseq** NP\_001036236

**MIM** 153390

**UniProt ID** P06239

**Reducing 12% SDS-PAGE (CBB stained) and WB (Anti-GST Mouse Monoclonal Antibody) analysis profile of purified LCK.**



1. LCK-174H  
2. BSA

 Tel: 1-631-559-9269 1-516-512-3133

 Email: [info@creative-biomart.com](mailto:info@creative-biomart.com)  Fax: 1-631-938-8127

 45-1 Ramsey Road, Shirley, NY 11967, USA