

Active Recombinant Full Length Human LCK Protein, DDK-tagged, Biotinylated

Cat. No. LCK-8482HF Lot. No. (See product label)

SPECIFICATION

Product Overview Full-length human LCK [1-509(end) amino acids of accession number NP_005347.2] was expressed as N- terminal DYKDDDDK tagged, biotinylated protein (62 kDa) using baculovirus expression system. The protein was purified by using DYKDDDDK tag antibody agarose.

Species Human

Source Sf21 Cells

ProteinLength 1-509(end)

Form 50 mM Tris-HCl, 150 mM NaCl, 0.05% Brij35, 1 mM DTT, 10% glycerol, pH7.5

Bio-activity The activity was measured by off-chip mobility shift assay. The enzyme was incubated with fluorescence-labeled substrate and Mg(or Mn)/ATP. The phosphorylated and unphosphorylated substrates were separated and detected by LabChip™3000.

Purity 99%

Applications SDS-PAGE

Storage Store at -80C. Avoid repeating freeze-thaws.

 Tel: 1-631-559-9269 1-516-512-3133

 Email: info@creative-biomart.com  Fax: 1-631-938-8127

 45-1 Ramsey Road, Shirley, NY 11967, USA

Conjugation Biotin

GENE INFORMATION

Gene Name lymphocyte-specific protein tyrosine kinase

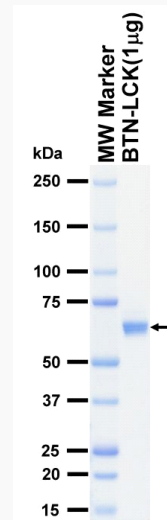
Official Symbol LCK

Synonyms LCK;IMD22;LSK;YT16;p56lck;pp58lck

Protein Refseq [NP_005347.2](#)

UniProt ID [P06239](#)

SDS-PAGE

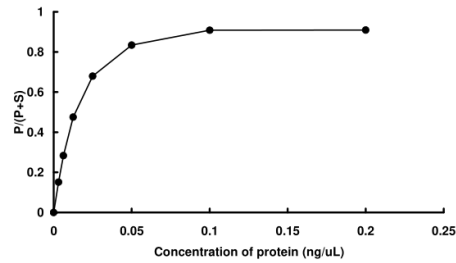


The purity was assessed by SDS-PAGE/CBB staining.

 Tel: 1-631-559-9269 1-516-512-3133

 Email: info@creative-biomart.com  Fax: 1-631-938-8127

 45-1 Ramsey Road, Shirley, NY 11967, USA

Activity data**Activity data**

The activity was measured by off-chip mobility shift assay. The enzyme was incubated with fluorescence-labeled substrate and Mg(or Mn)/ATP. The phosphorylated and unphosphorylated substrates were separated and detected by LabChip™3000.

 Tel: 1-631-559-9269 1-516-512-3133

 Email: info@creative-biomart.com  Fax: 1-631-938-8127

 45-1 Ramsey Road, Shirley, NY 11967, USA