

Recombinant Human Leucine Carboxyl Methyltransferase 1, His-tagged

Cat. No. LCMT1-1563H Lot. No. (See product label)

SPECIFICATION

Product Overview	Recombinant human LCMT7 protein, fused to His-tag at N-terminus, was expressed in E.coli and purified by using conventional chromatography techniques.
Species	Human
Source	E.coli
Description	LCMT1 catalyzes the methylation of the carboxyl group of the C-terminal leucine residue (leu309) of the catalytic subunit of protein phosphatase-2A.
Form	Liquid. In 20mM Tris-HCl buffer(pH 8.0) containing 10% glycerol, 1mM DTT, 0.15M NaCl.
Molecular Weight	41 kDa (358aa), confirmed by MALDI-TOF.
Purity	> 95% by SDS-PAGE
Concentration	1 mg/ml (determined by Bradford assay)
Sequences of amino acids	MGSSHHHHHH SSGLVPRGSH MGSHMATRQR ESSITSCCST SSCDADDEGV RGTCEDASLC KRFAVSIGYW HDPYIQHFVR LSKERKAPEI NRGYFARVHG VSQLIKAFRL KTECHCQIVN LGAGMDTTFW RLKDEDLLPS KYFEVDFPMI VTRKLHSIKK KPPLSSPILE LHSEDTLQMD GHILDSKRYA VIGADLRDLS ELEEKLKKN MNTQLPTLLI AECVLVYMTP EQSANLLKWA ANSFERAMFI

 Tel: 1-631-559-9269 1-516-512-3133

 Email: info@creative-biomart.com  Fax: 1-631-938-8127

 45-1 Ramsey Road, Shirley, NY 11967, USA

NYEQVNMGDR FGQIMIENLR RRQCFLAGVE TCKSLESQKE RLLSNGWETA
SAVDMMELYN RLPRAEVSRI ESLEFLDEME LLEQLMRHYC LCWATKGGNE
LGLKEITY

Storage

Can be stored at +4°C short term (1-2 weeks). For long term storage, aliquot and store at -20°C or -70°C. Avoid repeated freezing and thawing cycles.

Pathways

Histidine metabolism; Tyrosine metabolism

GENE INFORMATION

Gene Name

LCMT1 leucine carboxyl methyltransferase 1 [Homo sapiens]

Official Symbol

LCMT1

Synonyms

LCMT1; leucine carboxyl methyltransferase 1; LCMT; PPMT1; CGI-68; protein-leucine O-methyltransferase; protein phosphatase methyltransferase 1; EC 2.1.1

Gene ID

51451

mRNA Refseq

NM_001032391

Protein Refseq

NP_001027563

MIM

610286

UniProt ID

Q9UIC8

**Chromosome
Location**

16p12.1

Function

S-adenosylmethionine-dependent methyltransferase activity; protein C-terminal

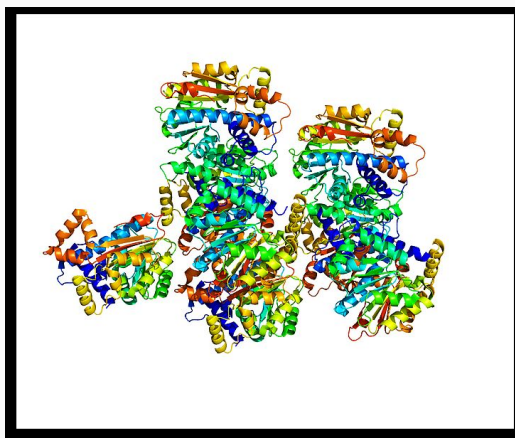
 Tel: 1-631-559-9269 1-516-512-3133


 Email: info@creative-biomart.com  Fax: 1-631-938-8127

 45-1 Ramsey Road, Shirley, NY 11967, USA


carboxyl O-methyltransferase activity; protein binding; transferase activity

PDBrendering based
on 3IEI.



 Tel: 1-631-559-9269 1-516-512-3133

 Email: info@creative-biomart.com  Fax: 1-631-938-8127

 45-1 Ramsey Road, Shirley, NY 11967, USA