

Active Recombinant Human LCMT1 protein, GST-tagged

Cat. No. LCMT1-187H Lot. No. (See product label)

SPECIFICATION

Product Overview	Recombinant Human LCMT1 fused with GST tag at N-terminal was expressed in Insect cells.
Species	Human
Source	Insect Cells
Description	Leucine carboxyl methyltransferase 1 (LCMT1) exclusively methylates the carboxyl group of leucine-309 in the catalytic subunit of protein phosphatase 2A. LCMT1 is essential for normal progression through mitosis and cell survival. Knocking-down LCMT1 leads to reduced formation of PP2A heterodimers and increased apoptosis. LCMT1 also regulates the association of PP2A and its substrate, Tau protein, with plasma membrane in neuroblastoma cells. Decreased level of PP2A methylation is found in Alzheimer disease.
Form	50mM Tris-HCl, pH 7.5, 150mM NaCl, 10mM glutathione, 0.1mM EDTA, 0.25mM DTT, 0.1mM PMSF, 25% glycerol.
Bio-activity	480 nmol/min/mg
Molecular Mass	63 kDa
Purity	>95%
Applications	Methyltransferase Assay

 Tel: 1-631-559-9269 1-516-512-3133

 Email: info@creative-biomart.com  Fax: 1-631-938-8127

 45-1 Ramsey Road, Shirley, NY 11967, USA

Stability	1 year at -70 centigrade from the date of shipment
Storage	Store product at -70 centigrade. For optimal storage, aliquot target into smaller quantities after centrifugation and store at recommended temperature. For most favorable performance, avoid repeated handling and multiple freeze/thaw cycles.
Concentration	0.1 µg/µl

GENE INFORMATION

Gene Name	LCMT1 leucine carboxyl methyltransferase 1 [Homo sapiens]
Official Symbol	LCMT1
Synonyms	LCMT1; leucine carboxyl methyltransferase 1; CGI 68; PPMT1; protein phosphatase methyltransferase 1; protein-leucine O-methyltransferase; [Phosphatase 2A protein]-leucine-carboxy methyltransferase 1; LCMT; CGI-68;
Gene ID	51451
mRNA Refseq	NM_016309
Protein Refseq	NP_057393
MIM	610286
UniProt ID	Q9UIC8
Chromosome Location	16p12.1

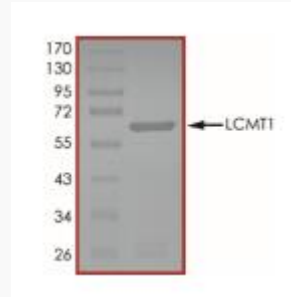
 Tel: 1-631-559-9269 1-516-512-3133

 Email: info@creative-biomart.com  Fax: 1-631-938-8127

 45-1 Ramsey Road, Shirley, NY 11967, USA

Function

S-adenosylmethionine-dependent methyltransferase activity; protein C-terminal carboxyl O-methyltransferase activity; protein binding; transferase activity;



 Tel: 1-631-559-9269 1-516-512-3133

 Email: info@creative-biomart.com  Fax: 1-631-938-8127

 45-1 Ramsey Road, Shirley, NY 11967, USA