

# Recombinant Human LCMT1 Protein, Myc/DDK-tagged, C13 and N15-labeled

Cat. No. LCMT1-5889H Lot. No. (See product label)

## SPECIFICATION

<b>Product Overview</b>	LCMT1 MS Standard C13 and N15-labeled recombinant protein (NP_057393) with a C-terminal MYC/DDK tag, was expressed in HEK293 cells.
<b>Species</b>	Human
<b>Source</b>	HEK293
<b>Description</b>	LCMT1 catalyzes the methylation of the carboxyl group of the C-terminal leucine residue (leu309) of the catalytic subunit of protein phosphatase-2A (PPP2CA).
<b>Molecular Mass</b>	38.4 kDa
<b>AA Sequence</b>	MATRQRESSITSCCSTSSCDADDEGVRGTCEDASLCKRFAVSIGYWHPYIQHFVR LSKERKAPEINRGYFARVHGVSQLIKAFLRKTECHCQIVNLGAGMDTTFWRLKDEDL LPSKYFEVD FPMIVTRKLSIKCKPPLSSPILELHSEDTLQMDGHILDSKRYAVIGADL RDLSELEEKLLKCNMNTQLPTLLIAECVLVYMTPEQSANLLKWAANSFERAMFINYE QVNMGDRFGQIMIENLRRRQC DLAGVETCKSLESQKERLLSNGWETASAVDMMEL YNRLPRAEVSRIESLEFLDEMELEQLMRHYCLCWATKGGNELGLKEITYTRTRPLE QKLISEEDLAANDILDYKDDDDKV
<b>Purity</b>	> 80% as determined by SDS-PAGE and Coomassie blue staining
<b>Stability</b>	Stable for 3 months from receipt of products under proper storage and handling conditions.

 Tel: 1-631-559-9269 1-516-512-3133

 Email: [info@creative-biomart.com](mailto:info@creative-biomart.com)  Fax: 1-631-938-8127

 45-1 Ramsey Road, Shirley, NY 11967, USA

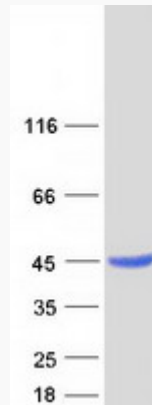
<b>Storage</b>	Store at -80 centigrade. Avoid repeated freeze-thaw cycles.
<b>Concentration</b>	50 µg/mL as determined by BCA
<b>Storage Buffer</b>	100 mM glycine, 25 mM Tris-HCl, pH 7.3.
<b>GENE INFORMATION</b>	
<b>Gene Name</b>	LCMT1 leucine carboxyl methyltransferase 1 [ Homo sapiens (human) ]
<b>Official Symbol</b>	LCMT1
<b>Synonyms</b>	LCMT1; leucine carboxyl methyltransferase 1; CGI 68; PPMT1; protein phosphatase methyltransferase 1; protein-leucine O-methyltransferase; [Phosphatase 2A protein]-leucine-carboxy methyltransferase 1; LCMT; CGI-68;
<b>Gene ID</b>	51451
<b>mRNA Refseq</b>	NM_016309
<b>Protein Refseq</b>	NP_057393
<b>MIM</b>	610286
<b>UniProt ID</b>	Q9UIC8

 Tel: 1-631-559-9269 1-516-512-3133

 Email: [info@creative-biomart.com](mailto:info@creative-biomart.com)  Fax: 1-631-938-8127

 45-1 Ramsey Road, Shirley, NY 11967, USA

SDS-PAGE



 Tel: 1-631-559-9269 1-516-512-3133

 Email: [info@creative-biomart.com](mailto:info@creative-biomart.com)  Fax: 1-631-938-8127

 45-1 Ramsey Road, Shirley, NY 11967, USA