

Recombinant Human LCN2 Protein, GST-tagged

Cat. No. LCN2-001H Lot. No. (See product label)

SPECIFICATION

Product Overview	Recombinant Human LCN2 Protein (19-198 aa (full-length)) with GST tag was expressed in E. coli.
Species	Human
Source	E.coli
ProteinLength	19-198
Description	This gene encodes a protein that belongs to the lipocalin family. Members of this family transport small hydrophobic molecules such as lipids, steroid hormones and retinoids. The protein encoded by this gene is a neutrophil gelatinase-associated lipocalin and plays a role in innate immunity by limiting bacterial growth as a result of sequestering iron-containing siderophores. The presence of this protein in blood and urine is an early biomarker of acute kidney injury. This protein is thought to be involved in multiple cellular processes, including maintenance of skin homeostasis, and suppression of invasiveness and metastasis. Mice lacking this gene are more susceptible to bacterial infection than wild type mice.
Molecular Mass	48.9kDa
Purity	>95% confirmed by 10% SDS-PAGE stained with Coomassie Blue (CB), immunoblotting with anti-6xHis (WB).
Applications	ELISA, Western Blot, Antibody Production, Protein array

 Tel: 1-631-559-9269 1-516-512-3133

 Email: info@creative-biomart.com  Fax: 1-631-938-8127

 45-1 Ramsey Road, Shirley, NY 11967, USA

Quality Control Test	10% SDS-PAGE stained with Coomassie Blue (CB) immunoblotting with anti-GST (WB) and peptide fingerprinting by MALDI-TOF mass spectrometry.
Storage	Prior to reconstitution, store the lyophilized protein at 2–8 centigrade. After reconstitution, store in working aliquots at –80 centigrade.
Expiry	All components are stable for 1 year of receipt, if stored properly.
Storage Buffer	Lyophilized from a solution containing phosphate buffered saline (PBS), pH 7.4. No preservatives added.
Shipping	Lyophilized at Ambient temperature

GENE INFORMATION

Gene Name	LCN2 lipocalin 2 [Homo sapiens (human)]
Official Symbol	LCN2
Synonyms	LCN2; lipocalin 2; p25; 24p3; MSFI; NGAL; neutrophil gelatinase-associated lipocalin; 25 kDa alpha-2-microglobulin-related subunit of MMP-9; migration-stimulating factor inhibitor; oncogene 24p3; siderocalin LCN2
Gene ID	3934
mRNA Refseq	NM_005564
Protein Refseq	NP_005555
MIM	600181

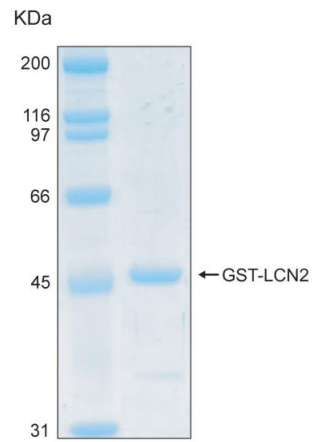
 Tel: 1-631-559-9269 1-516-512-3133

 Email: info@creative-biomart.com  Fax: 1-631-938-8127

 45-1 Ramsey Road, Shirley, NY 11967, USA

UniProt ID

P80188



 Tel: 1-631-559-9269 1-516-512-3133

 Email: info@creative-biomart.com  Fax: 1-631-938-8127

 45-1 Ramsey Road, Shirley, NY 11967, USA