

Active Recombinant Human LCN2 protein, His-tagged

Cat. No. LCN2-042H Lot. No. (See product label)

SPECIFICATION

Product Overview	Active Recombinant Human LCN2 protein(P80188-1)(Gln21-Gly198) is expressed from HEK293 with His tag at the C-Terminus.
Species	Human
Source	HEK293
ProteinLength	21-198 aa
Form	Lyophilized from 0.22µm filtered solution in PBS (pH 7.4).
Bio-activity	Immobilized Human NGAL, His Tag at 1µg/ml (100µl/Well) on the plate. Dose response curve for Anti-NGAL Antibody, hFc Tag with the EC50 of 2.5ng/ml determined by ELISA.
Molecular Mass	The protein has a predicted MW of 21.64 kDa. Due to glycosylation, the protein migrates to 25-30 kDa based on Bis-Tris PAGE result.
Endotoxin	Less than 1 EU per µg by the LAL method.
Purity	> 95% as determined by Bis-Tris PAGE > 95% as determined by HPLC
Storage	-20 to -80°C for 12 months as supplied from date of receipt. -80°C for 3 months after reconstitution. Recommend to aliquot the protein into smaller quantities for optimal storage. Please minimize freeze-thaw cycles.

 Tel: 1-631-559-9269 1-516-512-3133

 Email: info@creative-biomart.com  Fax: 1-631-938-8127

 45-1 Ramsey Road, Shirley, NY 11967, USA

Reconstitution Dissolve the lyophilized protein in distilled water.

GENE INFORMATION

Gene Name [LCN2 lipocalin 2 \[Homo sapiens \]](#)

Official Symbol [LCN2](#)

Synonyms LCN2; lipocalin 2; lipocalin 2 (oncogene 24p3); neutrophil gelatinase-associated lipocalin; 24p3; neutrophil gelatinase associated lipocalin; NGAL; oncogene 24p3; siderocalin; p25; lipocalin-2; migration-stimulating factor inhibitor; 25 kDa alpha-2-microglobulin-related subunit of MMP-9; MSFI;

Gene ID [3934](#)

mRNA Refseq [NM_005564](#)

Protein Refseq [NP_005555](#)

MIM [600181](#)

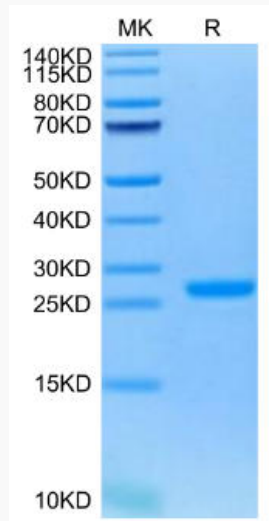
UniProt ID [P80188](#)

 Tel: 1-631-559-9269 1-516-512-3133

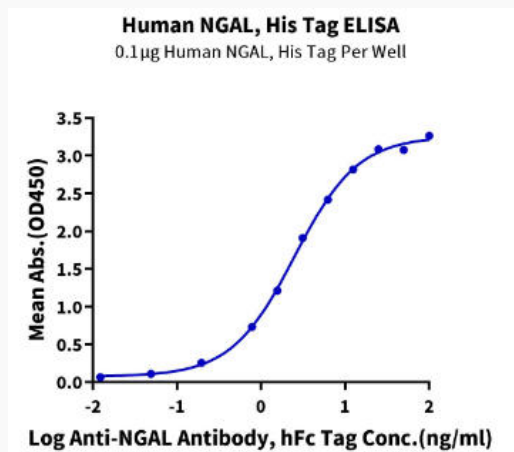
 Email: info@creative-biomart.com  Fax: 1-631-938-8127

 45-1 Ramsey Road, Shirley, NY 11967, USA

Bis-Tris PAGE



ELISA Data



 Tel: 1-631-559-9269 1-516-512-3133

 Email: info@creative-biomart.com  Fax: 1-631-938-8127

 45-1 Ramsey Road, Shirley, NY 11967, USA