

Recombinant Human LCN2 Protein, His-tagged

Cat. No. LCN2-1151H **Lot. No.** (See product label)

SPECIFICATION

Product Overview	Recombinant Human LCN2 Protein (Gln21-Gly198) with His tag was expressed in 293F.
Species	Human
Source	HEK293
ProteinLength	Gln21-Gly198
Description	This gene encodes a protein that belongs to the lipocalin family. Members of this family transport small hydrophobic molecules such as lipids, steroid hormones and retinoids. The protein encoded by this gene is a neutrophil gelatinase-associated lipocalin and plays a role in innate immunity by limiting bacterial growth as a result of sequestering iron-containing siderophores. The presence of this protein in blood and urine is an early biomarker of acute kidney injury. This protein is thought to be involved in multiple cellular processes, including maintenance of skin homeostasis, and suppression of invasiveness and metastasis. Mice lacking this gene are more susceptible to bacterial infection than wild type mice.
Form	Freeze-dried powder
Molecular Mass	Predicted Molecular Mass: 22.2 kDa; Accurate Molecular Mass: 27 kDa
Purity	> 90%

 Tel: 1-631-559-9269 1-516-512-3133

 Email: info@creative-biomart.com  Fax: 1-631-938-8127

 45-1 Ramsey Road, Shirley, NY 11967, USA

Applications	Positive Control; Immunogen; SDS-PAGE; WB.
Stability	The thermal stability is described by the loss rate. The loss rate was determined by accelerated thermal degradation test, that is, incubate the protein at 37 centigrade for 48h, and no obvious degradation and precipitation were observed. The loss rate is less than 5% within the expiration date under appropriate storage condition.
Storage	Avoid repeated freeze/thaw cycles. Store at 2-8 centigrade for one month. Aliquot and store at -80 centigrade for 12 months.
Storage Buffer	20mM Tris, 150mM NaCl, pH8.0, containing 1mM EDTA, 1mM DTT, 0.01% SKL, 5% Trehalose and Proclin300.
Reconstitution	Reconstitute in 20mM Tris, 150mM NaCl (pH8.0) to a concentration of 0.1-1.0 mg/mL. Do not vortex.

GENE INFORMATION

Gene Name	LCN2 lipocalin 2 [Homo sapiens (human)]
Official Symbol	LCN2
Synonyms	LCN2; lipocalin 2; p25; 24p3; MSFI; NGAL; neutrophil gelatinase-associated lipocalin; 25 kDa alpha-2-microglobulin-related subunit of MMP-9; migration-stimulating factor inhibitor; oncogene 24p3; siderocalin LCN2
Gene ID	3934
mRNA Refseq	NM_005564
Protein Refseq	NP_005555

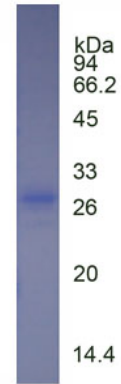
 Tel: 1-631-559-9269 1-516-512-3133

 Email: info@creative-biomart.com  Fax: 1-631-938-8127

 45-1 Ramsey Road, Shirley, NY 11967, USA

MIM 600181

UniProt ID P80188



 Tel: 1-631-559-9269 1-516-512-3133

 Email: info@creative-biomart.com  Fax: 1-631-938-8127

 45-1 Ramsey Road, Shirley, NY 11967, USA