

Recombinant Full Length Human LCN2 Protein, C-Flag-tagged

Cat. No. LCN2-1454HFL Lot. No. (See product label)

SPECIFICATION

Product Overview	Recombinant Full Length Human LCN2 Protein, fused to Flag-tag at C-terminus, was expressed in Mammalian cells.
Species	Human
Source	Mammalian Cells
Description	This gene encodes a protein that belongs to the lipocalin family. Members of this family transport small hydrophobic molecules such as lipids, steroid hormones and retinoids. The protein encoded by this gene is a neutrophil gelatinase-associated lipocalin and plays a role in innate immunity by limiting bacterial growth as a result of sequestering iron-containing siderophores. The presence of this protein in blood and urine is an early biomarker of acute kidney injury. This protein is thought to be involved in multiple cellular processes, including maintenance of skin homeostasis, and suppression of invasiveness and metastasis. Mice lacking this gene are more susceptible to bacterial infection than wild type mice.
Form	25 mM Tris HCl, pH 7.3, 100 mM glycine, 10% glycerol.
Molecular Mass	22.4 kDa
AA Sequence	MPLGLLWLGLALLGALHAQAQDSTSDLIPAPPLSKVPLQQNFQDNQFQGKWYVVGL AGNAILREDKDPQK MYATIYELKEDKSYNVTSVLFRRKKKCDYWIRTFVPGCQPGEFT LGNIKSYPGLTSYLVRVVSTNYNQHAM VFFKKVSQNREYFKITLYGRTEKELTSELKENFIRFSKSLGLPENHIVFPVPIDQCIDGT

 Tel: 1-631-559-9269 1-516-512-3133

 Email: info@creative-biomart.com  Fax: 1-631-938-8127

 45-1 Ramsey Road, Shirley, NY 11967, USA

RTRPLEQKLISEEDLAANDILDYKDDDDKV

Purity > 80% as determined by SDS-PAGE and Coomassie blue staining.

Stability Stable for 12 months from the date of receipt of the product under proper storage and handling conditions. Avoid repeated freeze-thaw cycles.

Storage Store at -80 centigrade.

Concentration >50 ug/mL as determined by microplate BCA method.

Preparation Recombinant protein was captured through anti-DDK affinity column followed by conventional chromatography steps.

Protein Families Secreted Protein

Full Length Full L.

GENE INFORMATION

Gene Name [LCN2 lipocalin 2 \[Homo sapiens \(human\) \]](#)

Official Symbol [LCN2](#)

Synonyms p25; 24p3; MSFI; NGAL

Gene ID [3934](#)

mRNA Refseq [NM_005564.5](#)

Protein Refseq [NP_005555.2](#)

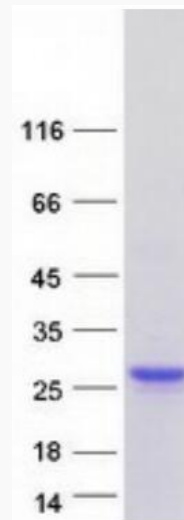
 Tel: 1-631-559-9269 1-516-512-3133

 Email: info@creative-biomart.com  Fax: 1-631-938-8127

 45-1 Ramsey Road, Shirley, NY 11967, USA

MIM 600181

UniProt ID P80188



Coomassie blue staining of purified LCN2 protein.

 Tel: 1-631-559-9269 1-516-512-3133

 Email: info@creative-biomart.com  Fax: 1-631-938-8127

 45-1 Ramsey Road, Shirley, NY 11967, USA