

Active Recombinant Human LCN2 protein

Cat. No. LCN2-2574H **Lot. No.** (See product label)

SPECIFICATION

Product Overview	Recombinant Human Lipocalin-2/NGAL/LCN2 Protein is produced by insect cell-baculovirus expression system. The target protein is expressed with sequence (Gln21-Gly198) of human LCN2/NGAL (Accession #NP_005555.2).
Species	Human
Source	Sf9 Cells
ProteinLength	Gln21-Gly198
Form	Lyophilized from a 0.22 µm filtered solution of PBS, pH 7.4.
Bio-activity	Measured by its ability to bind Iron(III) dihydroxybenzoic acid [Fe(DHBA)3]. The binding of Fe(DHBA)3 results in the quenching of Trp fluorescence in recombinant human Lipocalin-2. Recombinant human Lipocalin-2 can bind >10625 µM of Fe(DHBA)3.
Molecular Mass	22 kDa
Endotoxin	< 0.1 EU/µg of the protein by LAL method.
Purity	> 97% by SDS-PAGE.
Storage	Store the lyophilized protein at -20°C to -80 °C for long term. After reconstitution, the protein solution is stable at -20 °C for 3 months, at 2-8 °C for

 Tel: 1-631-559-9269 1-516-512-3133

 Email: info@creative-biomart.com  Fax: 1-631-938-8127

 45-1 Ramsey Road, Shirley, NY 11967, USA

up to 1 week.

Reconstitution Reconstitute to a concentration of 0.1-0.5 mg/mL in sterile distilled water.

GENE INFORMATION

Gene Name [LCN2 lipocalin 2 \[Homo sapiens \]](#)

Official Symbol [LCN2](#)

Synonyms LCN2; lipocalin 2; lipocalin 2 (oncogene 24p3); neutrophil gelatinase-associated lipocalin; 24p3; neutrophil gelatinase associated lipocalin; NGAL; oncogene 24p3; siderocalin; p25; lipocalin-2; migration-stimulating factor inhibitor; 25 kDa alpha-2-microglobulin-related subunit of MMP-9; MSFI;

Gene ID [3934](#)

mRNA Refseq [NM_005564](#)

Protein Refseq [NP_005555](#)

MIM [600181](#)

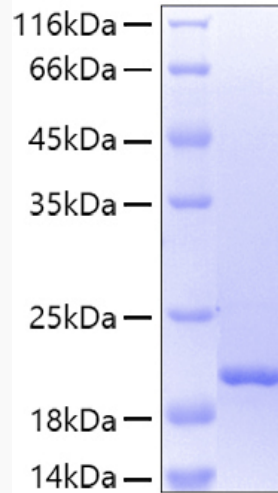
UniProt ID [P80188](#)

 Tel: 1-631-559-9269 1-516-512-3133

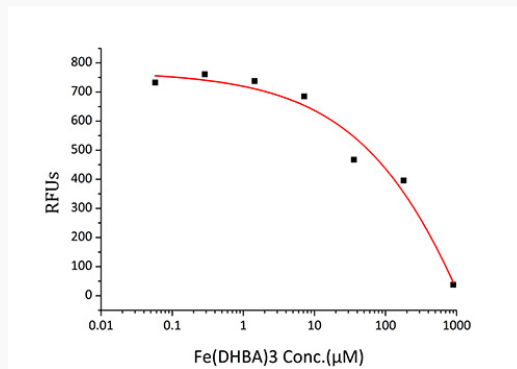
 Email: info@creative-biomart.com  Fax: 1-631-938-8127

 45-1 Ramsey Road, Shirley, NY 11967, USA

SDS-PAGE



Bio-activity



 Tel: 1-631-559-9269 1-516-512-3133

 Email: info@creative-biomart.com  Fax: 1-631-938-8127

 45-1 Ramsey Road, Shirley, NY 11967, USA