

Recombinant Human LCN2 Protein, Myc/DDK-tagged, C13 and N15-labeled

Cat. No. LCN2-3973H **Lot. No.** (See product label)

SPECIFICATION

Product Overview

LCN2 MS Standard C13 and N15-labeled recombinant protein (NP_005555) with a C-terminal MYC/DDK tag, was expressed in HEK293 cells.

Species

Human

Source

HEK293

Description

This gene encodes a protein that belongs to the lipocalin family. Members of this family transport small hydrophobic molecules such as lipids, steroid hormones and retinoids. The protein encoded by this gene is a neutrophil gelatinase-associated lipocalin and plays a role in innate immunity by limiting bacterial growth as a result of sequestering iron-containing siderophores. The presence of this protein in blood and urine is an early biomarker of acute kidney injury. This protein is thought to be involved in multiple cellular processes, including maintenance of skin homeostasis, and suppression of invasiveness and metastasis. Mice lacking this gene are more susceptible to bacterial infection than wild type mice.

Molecular Mass

22.6 kDa

AA Sequence

MPLGLLWLGLALLGALHAQAQDSTSDLIPAPPLSKVPLQQNFQDNQFQGKWYVVG
 LAGNAILREDKDPQKMYATIYELKEDKSYNVTSVLFRRKKKCDYWIRTFVPGCQPGEFT
 LGNIKSYPLGTSYLVRVSTNYNQHAMVFFKKVSQNREYFKITLYGRTKELTSELKEN
 FIRFSKSLGLPENHIVFPVPIDQCIDGTRTRPLEQKLISEEDLAANDILDYKDDDDKV

 Tel: 1-631-559-9269 1-516-512-3133

 Email: info@creative-biomart.com  Fax: 1-631-938-8127

 45-1 Ramsey Road, Shirley, NY 11967, USA

Purity	> 80% as determined by SDS-PAGE and Coomassie blue staining
Stability	Stable for 3 months from receipt of products under proper storage and handling conditions.
Storage	Store at -80 centigrade. Avoid repeated freeze-thaw cycles.
Concentration	50 µg/mL as determined by BCA
Storage Buffer	100 mM glycine, 25 mM Tris-HCl, pH 7.3.

GENE INFORMATION

Gene Name	LCN2 lipocalin 2 [Homo sapiens (human)]
Official Symbol	LCN2
Synonyms	LCN2; lipocalin 2; lipocalin 2 (oncogene 24p3); neutrophil gelatinase-associated lipocalin; 24p3; neutrophil gelatinase associated lipocalin; NGAL; oncogene 24p3; siderocalin; p25; lipocalin-2; migration-stimulating factor inhibitor; 25 kDa alpha-2-microglobulin-related subunit of MMP-9; MSFI;
Gene ID	3934
mRNA Refseq	NM_005564
Protein Refseq	NP_005555
MIM	600181
UniProt ID	P80188

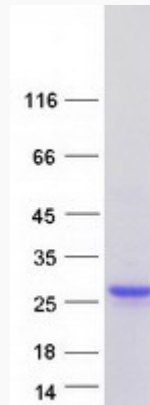
 Tel: 1-631-559-9269 1-516-512-3133

 Email: info@creative-biomart.com  Fax: 1-631-938-8127

 45-1 Ramsey Road, Shirley, NY 11967, USA



SDS-PAGE



Tel: 1-631-559-9269 1-516-512-3133

Email: info@creative-biomart.com Fax: 1-631-938-8127

45-1 Ramsey Road, Shirley, NY 11967, USA