

## Recombinant Human LCN2 Protein (Gln21-Gly198), C-His tagged

Cat. No. LCN2-4424H Lot. No. (See product label)

### SPECIFICATION

<b>Product Overview</b>	Recombinant human LCN2 (Gln21-Gly198) fused with the C-terminal His tag was expressed in Mammalian cells.
<b>Species</b>	Human
<b>Source</b>	Mammalian Cells
<b>ProteinLength</b>	Gln21-Gly198
<b>Form</b>	Lyophilized powder/frozen liquid
<b>Molecular Mass</b>	19.58 kDa
<b>Endotoxin</b>	< 1.0 EU/μg of the protein as determined by the LAL method.
<b>Purity</b>	>90% as determined by SDS-PAGE.
<b>Notes</b>	For research use only.
<b>Storage</b>	Use a manual defrost freezer and avoid repeated freeze thaw cycles. Store at 2 to 8 centigrade for one week. Store at -20 to -80 centigrade for twelve months from the date of receipt.
<b>Storage Buffer</b>	Supplied as solution form in PBS or lyophilized from PBS.

 Tel: 1-631-559-9269 1-516-512-3133

 Email: [info@creative-biomart.com](mailto:info@creative-biomart.com)  Fax: 1-631-938-8127

 45-1 Ramsey Road, Shirley, NY 11967, USA

**Reconstitution** Reconstitute in sterile water for a stock solution.

**Shipping** They are shipped out with dry ice/blue ice unless customers require otherwise.

## GENE INFORMATION

**Gene Name** [LCN2 lipocalin 2 \[ Homo sapiens \(human\) \]](#)

**Official Symbol** [LCN2](#)

**Synonyms** LCN2; lipocalin 2; lipocalin 2 (oncogene 24p3); neutrophil gelatinase-associated lipocalin; 24p3; neutrophil gelatinase associated lipocalin; NGAL; oncogene 24p3; siderocalin; p25; lipocalin-2; migration-stimulating factor inhibitor; 25 kDa alpha-2-microglobulin-related subunit of MMP-9; MSFI;

**Gene ID** [3934](#)

**mRNA Refseq** [NM\\_005564](#)

**Protein Refseq** [NP\\_005555](#)

**MIM** [600181](#)

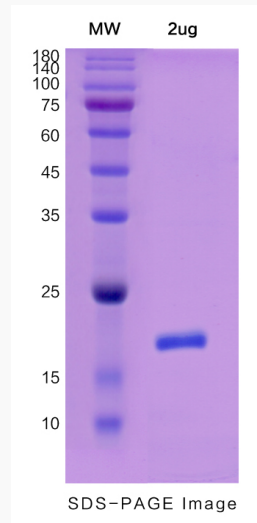
**UniProt ID** [P80188](#)

 Tel: 1-631-559-9269 1-516-512-3133

 Email: [info@creative-biomart.com](mailto:info@creative-biomart.com)  Fax: 1-631-938-8127

 45-1 Ramsey Road, Shirley, NY 11967, USA

**SDS-PAGE**



 Tel: 1-631-559-9269 1-516-512-3133

 Email: [info@creative-biomart.com](mailto:info@creative-biomart.com)  Fax: 1-631-938-8127

 45-1 Ramsey Road, Shirley, NY 11967, USA