

Recombinant Staphylococcus Aureus LDHA Protein (1-317 aa), His-SUMO-tagged

Cat. No. LDHA-1914S **Lot. No.** (See product label)

SPECIFICATION

Product Overview Recombinant Staphylococcus Aureus (strain Mu50/ATCC 700699) LDHA Protein (1-317 aa) is produced by E. coli expression system. This protein is fused with a 6xHis-SUMO tag at the N-terminal. Protein Description: Full Length.

Species Staphylococcus Aureus

Source E.coli

ProteinLength 1-317 aa

Description Appears to be the primary factor that allows S.aureus growth during nitrosative stress in both aerobically and anaerobically cultured cells.

Form Tris-based buffer,50% glycerol

Molecular Mass 50.6 kDa

AA Sequence

```
MNKFKGNKVVLLIGNGAVGSSYAFSLVNQSIIVDELVIIDLDTKVRGDVMDLKHATPYS
PTTVRVKAGEYS DCHDADLVVICAGAAQKPGETRLDLVSKNLKIFKSIVGEVMASKF
DGIFLVATNPVDILAYATWKFSGLPKERVIGSGTILDSARFLLLSEAFDVAPRSVDAQ
IIGEHGDTLPVWSHANIAGQPLKTLLEQRPEGKAQIEQIFVQTRDAAYDIIQAKGATY
YGVAMGLARITEAIFRNEDAVLTVSALLEGEYDEEDVYIGVPAVINRNGIRNVVEIPLN
DEEQSKFAHSAKTLKDIMAEAEELK
```

 Tel: 1-631-559-9269 1-516-512-3133

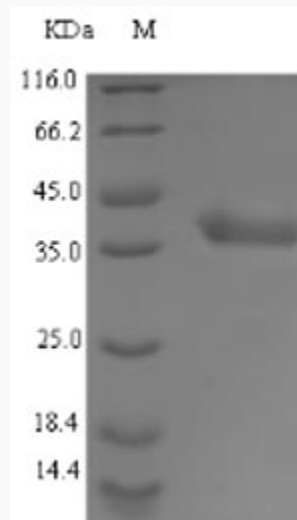
 Email: info@creative-biomart.com  Fax: 1-631-938-8127

 45-1 Ramsey Road, Shirley, NY 11967, USA

Purity	> 90% as determined by SDS-PAGE.
Notes	Repeated freezing and thawing is not recommended. Store working aliquots at 4 centigrade for up to one week.
Storage	The shelf life is related to many factors, storage state, buffer ingredients, storage temperature and the stability of the protein itself. Generally, the shelf life of liquid form is 6 months at -20 centigrade/-80 centigrade. The shelf life of lyophilized form is 12 months at -20 centigrade/-80 centigrade.
Concentration	A hardcopy of COA with reconstitution instruction is sent along with the products.

GENE INFORMATION

Synonyms	ldhA; Short name:L-LDH 1;
UniProt ID	P65255



 Tel: 1-631-559-9269 1-516-512-3133

 Email: info@creative-biomart.com  Fax: 1-631-938-8127

 45-1 Ramsey Road, Shirley, NY 11967, USA



(Tris-Glycine gel) Discontinuous SDS-PAGE (reduced) with 5% enrichment gel and 15% separation gel.

 Tel: 1-631-559-9269 1-516-512-3133

 Email: info@creative-biomart.com  Fax: 1-631-938-8127

 45-1 Ramsey Road, Shirley, NY 11967, USA