

Active Recombinant Human LDHA Protein, His-tagged

Cat. No. LDHA-29849TH Lot. No. (See product label)

SPECIFICATION

Product Overview	Recombinant human LDHA (1-332aa) protein with His tag was expressed in E.coli (Bioactivity Validated).
Species	Human
Source	E.coli
ProteinLength	1-332 a.a.
Description	LDHA, also known as L-lactate dehydrogenase A chain, is an enzyme that catalyzes the conversion of L-lactate and NAD ⁺ to pyruvate and NADH in the final step of anaerobic glycolysis. This protein is found predominantly in muscle tissue and belongs to the lactate dehydrogenase family. Mutations in LDHA have been linked to exertional myoglobinuria.
Form	Liquid
Bio-activity	Specific activity is > 300 units/mg, in which one unit will convert 1.0 umole of pyruvate to L-lactate and beta-NAD per minute at pH 7.5 at 37C.
Molecular Mass	38.8 kDa
AA Sequence	MGSSHHHHHSSGLVPRGSHMATLKDQLIYNLLKEEQTPQNKITVVGVGAVGMACA ISILMKDLADELALVDVIEDKCLKGEMMDLQHGSLFLRTPKIVSGKDYNVTANSKLVIIITA GARQQEGESRLNLVQRNVNIFKFIIPNVVKYSPNCKLLIVSNPVDILTYYVAWKISGFPK

 Tel: 1-631-559-9269 1-516-512-3133

 Email: info@creative-biomart.com  Fax: 1-631-938-8127

 45-1 Ramsey Road, Shirley, NY 11967, USA

NRVIGSGCNLDSARFRYLMGERLGVHPLSCHGWVLGEHGDSSVPVWSGMNVAGV
 SLKTLHPDLGTDKDKEQWKEVHKQVVESAYEVIKLKGYSWAIGLSVADLAESIMKN
 LRRVHPVSTMIKGLYGIKDDVFLSVPCILGQNGISDLVKVTLTSEEEARLKKSADTLW
 GIQKELQF

Purity > 95% by SDS - PAGE

Storage Can be stored at +4 centigrade short term (1-2 weeks). For long term storage, aliquot and store at -20 centigrade or -70 centigrade. Avoid repeated freezing and thawing cycles.

Concentration 0.5 mg/mL(determined by Bradford assay)

Storage Buffer 20mM Tris-HCl buffer (pH8.0) containing 20% glycerol, 0.1M NaCl

GENE INFORMATION

Gene Name LDHA

Official Symbol LDHA lactate dehydrogenase A [Homo sapiens (human)]

Synonyms LDHA; lactate dehydrogenase A; LDHM; GSD11; PIG19; HEL-S-133P; L-lactate dehydrogenase A chain; LDH muscle subunit; LDH-A; LDH-M; cell proliferation-inducing gene 19 protein; epididymis secretory sperm binding protein Li 133P; lactate dehydrogenase M; proliferation-inducing gene 19; renal carcinoma antigen NY-REN-59; EC 1.1.1.27

Gene ID 3939

mRNA Refseq NM_005566

 Tel: 1-631-559-9269 1-516-512-3133

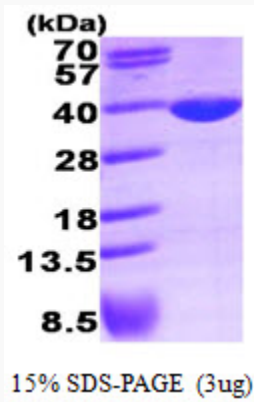
 Email: info@creative-biomart.com  Fax: 1-631-938-8127

 45-1 Ramsey Road, Shirley, NY 11967, USA

Protein Refseq NP_005557

MIM 150000

UniProt ID P00338



 Tel: 1-631-559-9269 1-516-512-3133

 Email: info@creative-biomart.com  Fax: 1-631-938-8127

 45-1 Ramsey Road, Shirley, NY 11967, USA