

# Active Recombinant Full Length Human LDHA Protein, C-Flag-tagged

Cat. No. LDHA-494HFL Lot. No. (See product label)

## SPECIFICATION

### Product Overview

Recombinant Full Length Human LDHA Protein, fused to Flag-tag at C-terminus, was expressed in Mammalian cells.

### Species

Human

### Source

Mammalian Cells

### Description

The protein encoded by this gene catalyzes the conversion of L-lactate and NAD to pyruvate and NADH in the final step of anaerobic glycolysis. The protein is found predominantly in muscle tissue and belongs to the lactate dehydrogenase family. Mutations in this gene have been linked to exertional myoglobinuria. Multiple transcript variants encoding different isoforms have been found for this gene. The human genome contains several non-transcribed pseudogenes of this gene.

### Form

25 mM Tris HCl, pH 7.3, 100 mM glycine, 10% glycerol.

### Bio-activity

Higher specific activity than endogenous human LDHA: Human recombinant LDHA was compared side-by-side with purified human liver LDH5 in a spectrophotometric pyruvate to lactate conversion assay. Activity is shown as a decrease in absorbance at 340nm over time. The activity of recombinant human LDHA is comparable to that of endogenously expressed human LDH5.

### Molecular Mass

36.5 kDa

 Tel: 1-631-559-9269 1-516-512-3133

 Email: [info@creative-biomart.com](mailto:info@creative-biomart.com)  Fax: 1-631-938-8127

 45-1 Ramsey Road, Shirley, NY 11967, USA

<b>AA Sequence</b>	MATLKDQLIYNLLKEEQTPQNKITVVGVGAVGMACAISILMKDLADELALVDVIEDKLK GEMMDLQHGSFLRTPKIVSGKDYNVTANSKLVIIITAGARQQEGESRLNLVQRNVNI FKFIIPNVVKYSPNCKLLIVSNPV DILTYVAWKISGFPKNRVIGSGCNLDSARFRYLMG ERLGVHPLSCHGWVLGEHGDSSVPVWSGMNVAGVS LKTLHPDLGTDKDKEQWKE VHKQVVESAYEVIKLGKGYTSAIGLSVADLAESIMKNLRRVHPVSTMIGL YGIKDDVFLSVPCILGQNGISDLVKVTLTSEEEARLKKSADTLWGIQKELQFTRTRPL EQKLISEEDLAANDILDYKDDDDKV
<b>Purity</b>	> 80% as determined by SDS-PAGE and Coomassie blue staining.
<b>Stability</b>	Stable for 12 months from the date of receipt of the product under proper storage and handling conditions. Avoid repeated freeze-thaw cycles.
<b>Storage</b>	Store at -80 centigrade.
<b>Concentration</b>	>50 ug/mL as determined by microplate BCA method.
<b>Preparation</b>	Recombinant protein was captured through anti-DDK affinity column followed by conventional chromatography steps.
<b>Protein Families</b>	Druggable Genome
<b>Protein Pathways</b>	Cysteine and methionine metabolism, Glycolysis / Gluconeogenesis, Metabolic pathways, Propanoate metabolism, Pyruvate metabolism
<b>Full Length</b>	Full L.

## GENE INFORMATION

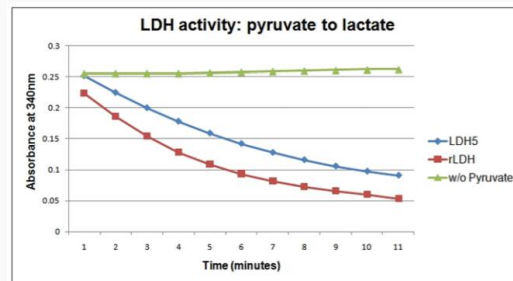
**Gene Name** LDHA lactate dehydrogenase A [ Homo sapiens (human) ]

 Tel: 1-631-559-9269 1-516-512-3133

 Email: [info@creative-biomart.com](mailto:info@creative-biomart.com)  Fax: 1-631-938-8127

 45-1 Ramsey Road, Shirley, NY 11967, USA

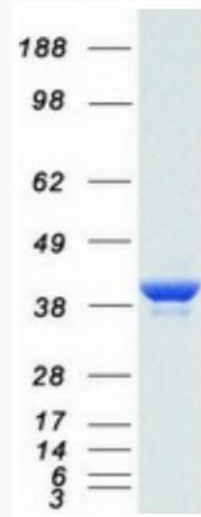
<b>Official Symbol</b>	LDHA
<b>Synonyms</b>	LDHM; GSD11; PIG19; HEL-S-133P
<b>Gene ID</b>	3939
<b>mRNA Refseq</b>	NM_005566.4
<b>Protein Refseq</b>	NP_005557.1
<b>MIM</b>	150000
<b>UniProt ID</b>	P00338



Tel: 1-631-559-9269 1-516-512-3133

Email: [info@creative-biomart.com](mailto:info@creative-biomart.com) Fax: 1-631-938-8127

45-1 Ramsey Road, Shirley, NY 11967, USA



Coomassie blue staining of purified LDHA protein.

 Tel: 1-631-559-9269 1-516-512-3133

 Email: [info@creative-biomart.com](mailto:info@creative-biomart.com)  Fax: 1-631-938-8127

 45-1 Ramsey Road, Shirley, NY 11967, USA