

# Recombinant Human LDHAL6B Protein, Myc/DDK-tagged, C13 and N15-labeled

**Cat. No.** LDHAL6B-2953H    **Lot. No.** (See product label)

## SPECIFICATION

<b>Product Overview</b>	LDHAL6B MS Standard C13 and N15-labeled recombinant protein (NP_149972) with a C-terminal MYC/DDK tag, was expressed in HEK293 cells.
<b>Species</b>	Human
<b>Source</b>	HEK293
<b>Description</b>	LDHAL6B (Lactate Dehydrogenase A Like 6B) is a Protein Coding gene. Diseases associated with LDHAL6B include Hodgkin's Lymphoma, Lymphocytic Depletion and Methotrexate-Associated Lymphoproliferation. Among its related pathways are Glucose metabolism and Pyruvate metabolism and Citric Acid (TCA) cycle. Gene Ontology (GO) annotations related to this gene include oxidoreductase activity and L-lactate dehydrogenase activity. An important paralog of this gene is LDHAL6A.
<b>Molecular Mass</b>	42 kDa
<b>AA Sequence</b>	MSWTVPVVRASQRMSSVGANFLCLGMALCLRQATRIPLNGTWLFTPVSKMATVKS ELIERFTSEKPVHHSKVSIIIGTGSVGMACAISILLKGLSDELALVDLDEDKLGKGETMDL QHGSFPFKMPNIVCSKDYFVTANSNLVIITAGARQEKGETRLNLVQRNVAIFKLMISSI VQYSPHCKLIIVSNPVDILTIVAWKLSAFPKNRIIGSGCNLDTARFRFLIGQKGLGIHSES CHGWILGEHGDSSVPVWSGVNIAGVPLKDLNSDIGTDKDPEQWKNVHKEVTATAYE IIMKMGYTSWAIGLSVADLTESILKNLRRRIHPVSTITKGLYGIDEEVFLSIPCILGENGITN LIKIKLTPEEEAHLKKSATLWEIQNKLKLTRTRPLEQKLISEEDLAANDILDYKDDDDK

 Tel: 1-631-559-9269    1-516-512-3133

 Email: [info@creative-biomart.com](mailto:info@creative-biomart.com)     Fax: 1-631-938-8127

 45-1 Ramsey Road, Shirley, NY 11967, USA

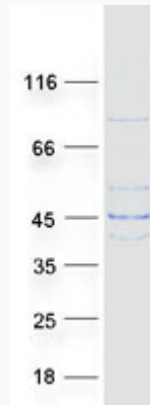
	V
<b>Purity</b>	> 80% as determined by SDS-PAGE and Coomassie blue staining
<b>Stability</b>	Stable for 3 months from receipt of products under proper storage and handling conditions.
<b>Storage</b>	Store at -80 centigrade. Avoid repeated freeze-thaw cycles.
<b>Concentration</b>	50 µg/mL as determined by BCA
<b>Storage Buffer</b>	100 mM glycine, 25 mM Tris-HCl, pH 7.3.
<b>GENE INFORMATION</b>	
<b>Gene Name</b>	LDHAL6B lactate dehydrogenase A-like 6B [ Homo sapiens (human) ]
<b>Official Symbol</b>	LDHAL6B
<b>Synonyms</b>	LDHAL6B; lactate dehydrogenase A-like 6B; lactate dehydrogenase A like 6, LDHAL6; L-lactate dehydrogenase A-like 6B; LDH6B; LDHL; lactate dehydrogenase A-like 6; LDHAL6;
<b>Gene ID</b>	92483
<b>mRNA Refseq</b>	NM_033195
<b>Protein Refseq</b>	NP_149972
<b>UniProt ID</b>	Q9BYZ2

 Tel: 1-631-559-9269 1-516-512-3133

 Email: [info@creative-biomart.com](mailto:info@creative-biomart.com)  Fax: 1-631-938-8127

 45-1 Ramsey Road, Shirley, NY 11967, USA

**SDS-PAGE**



 Tel: 1-631-559-9269 1-516-512-3133

 Email: [info@creative-biomart.com](mailto:info@creative-biomart.com)  Fax: 1-631-938-8127

 45-1 Ramsey Road, Shirley, NY 11967, USA