

Recombinant Human LDHC Protein, Myc/DDK-tagged

Cat. No. LDHC-002H Lot. No. (See product label)

SPECIFICATION

Product Overview	Recombinant protein of human lactate dehydrogenase C (LDHC), transcript variant 2 with a C-Myc/DDK tag was expressed in HEK293T.
Species	Human
Source	HEK293
Description	Lactate dehydrogenase C catalyzes the conversion of L-lactate and NAD to pyruvate and NADH in the final step of anaerobic glycolysis. LDHC is testis-specific and belongs to the lactate dehydrogenase family. Two transcript variants have been detected which differ in the 5' untranslated region.
Molecular Mass	36.1 kDa
Purity	>80% as determined by SDS-PAGE and Coomassie blue staining
Stability	Stable for 12 months from the date of receipt of the product under proper storage and handling conditions. Avoid repeated freeze-thaw cycles.
Storage	Store at -80 centigrade.
Concentration	>50 µg/mL as determined by microplate BCA method
Storage Buffer	25 mM Tris.HCl, pH 7.3, 100 mM glycine, 10% glycerol

 Tel: 1-631-559-9269 1-516-512-3133

 Email: info@creative-biomart.com  Fax: 1-631-938-8127

 45-1 Ramsey Road, Shirley, NY 11967, USA

GENE INFORMATION

Gene Name LDHC lactate dehydrogenase C [Homo sapiens (human)]

Official Symbol LDHC

Synonyms LDHC; lactate dehydrogenase C; CT32; LDH3; LDHX; L-lactate dehydrogenase C chain; LDH testis subunit; LDH-C; LDH-X; cancer/testis antigen 32; lactate dehydrogenase C4; lactate dehydrogenase c variant 1; lactate dehydrogenase c variant 3; lactate dehydrogenase c variant 4; lactate dehydrogenase c variant 5; testis secretory sperm-binding protein Li 234P; EC 1.1.1.27

Gene ID 3948

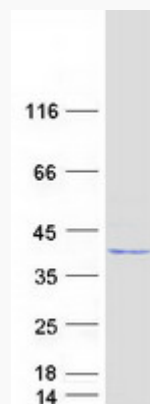
mRNA Refseq NM_017448

Protein Refseq NP_059144

MIM 150150

UniProt ID P07864

SDS-PAGE



Tel: 1-631-559-9269 1-516-512-3133

Email: info@creative-biomart.com Fax: 1-631-938-8127

45-1 Ramsey Road, Shirley, NY 11967, USA