

# Recombinant Full Length Human LDLR Protein, C-Flag-tagged

Cat. No. LDLR-1033HFL Lot. No. (See product label)

## SPECIFICATION

<b>Product Overview</b>	Recombinant Full Length Human LDLR Protein, fused to Flag-tag at C-terminus, was expressed in Mammalian cells.
<b>Species</b>	Human
<b>Source</b>	Mammalian Cells
<b>Description</b>	The low density lipoprotein receptor (LDLR) gene family consists of cell surface proteins involved in receptor-mediated endocytosis of specific ligands. Low density lipoprotein (LDL) is normally bound at the cell membrane and taken into the cell ending up in lysosomes where the protein is degraded and the cholesterol is made available for repression of microsomal enzyme 3-hydroxy-3-methylglutaryl coenzyme A (HMG CoA) reductase, the rate-limiting step in cholesterol synthesis. At the same time, a reciprocal stimulation of cholesterol ester synthesis takes place. Mutations in this gene cause the autosomal dominant disorder, familial hypercholesterolemia. Alternate splicing results in multiple transcript variants.
<b>Form</b>	25 mM Tris HCl, pH 7.3, 100 mM glycine, 10% glycerol.
<b>Molecular Mass</b>	93 kDa
<b>AA Sequence</b>	MGPWGWKLRWTVALLLAAAGTAVGDR CERNEFQCQDGK CISYKWWCDGSAECQD GSDSQETCLSVTCKS GDFSCGGRVNR CIPQFWRCDGQVDCDNGSDEQGCPPKT CSQDEF RCHD GK CISRQFVCDSDRDCLDGSDE ASCPVLTCGPASFQCNSSTCIPQ LWACDNDPDCEDGSDEWPQRCRGLYVFQGDSSPCSAFEFHCLSGECI HSSWRCD

 Tel: 1-631-559-9269 1-516-512-3133

 Email: [info@creative-biomart.com](mailto:info@creative-biomart.com)  Fax: 1-631-938-8127

 45-1 Ramsey Road, Shirley, NY 11967, USA

GGPDCKDKSDEENCAVATCRPDEFQCS DGNCIHGSRQCDREYDCKDMSDEVGCV  
 NVTLCCEGPN KFKCHSGECITLDKVCNMARDCRDWSDEPIKECGTNECLDNNGGCS  
 HVCNDLKIGYECLCPDGFQLVAQR RCEDIDECQDPDTCSQLCVNLEGGYKCQCEE  
 GFQLDPHTKACKAVGSIAYLFFTNRHEVRKMTLDRSEYT SLIPNLRNVVALDTEVAS  
 NRIYWSDL SQRMICSTQLDRAHGVSSYDTVISRDIQAPDGLAVDWIHSNIYW TDSVL  
 GTVSVADTKGVKRKTLFRENGSKPRAIVVDPVHGFMWTDWGTTPAKIKKGGNGV  
 DIYSLVTENI QWPNGITLDLLSGRLYWVDSKLHSSIDVNGGNRKTILEDEKRLAHP  
 FSLAVFEDKVFWDIINEAIFS ANRLTGSDVNLLAENLLSPEDMVLFHNLTPRQGVN  
 WCERTTSLNNGGCQYLCLPAPQINPHSPKFTCACPD GMLLARDMRSCLTEAEAAVA  
 TQETSTVRLKVSSTAVRTQHTTTRPVPDTSRLPGATPGLTTVEIVTMSHQ ALGDVA  
 GRGNEKKPSSVRALSIVLPIVLLVFLCLGVFLLWKNWRLKNINSINFDPVYQKTTE  
 EVHICH  
 NQDGYSYPSRQMVSLEDDVATRTRPLEQKLISEEDLAANDILDYKDDDDKV

<b>Purity</b>	> 80% as determined by SDS-PAGE and Coomassie blue staining.
<b>Stability</b>	Stable for 12 months from the date of receipt of the product under proper storage and handling conditions. Avoid repeated freeze-thaw cycles.
<b>Storage</b>	Store at -80 centigrade.
<b>Concentration</b>	>50 ug/mL as determined by microplate BCA method.
<b>Preparation</b>	Recombinant protein was captured through anti-DDK affinity column followed by conventional chromatography steps.
<b>Protein Families</b>	Druggable Genome, ES Cell Differentiation/IPS, Transmembrane
<b>Protein Pathways</b>	Endocytosis

 Tel: 1-631-559-9269 1-516-512-3133

 Email: [info@creative-biomart.com](mailto:info@creative-biomart.com)  Fax: 1-631-938-8127

 45-1 Ramsey Road, Shirley, NY 11967, USA

Full Length Full L.

## GENE INFORMATION

**Gene Name** LDLR low density lipoprotein receptor [ Homo sapiens (human) ]

**Official Symbol** LDLR

**Synonyms** FH; FHC; FHCL1; LDLCQ2

**Gene ID** 3949

**mRNA Refseq** NM\_000527.5

**Protein Refseq** NP\_000518.1

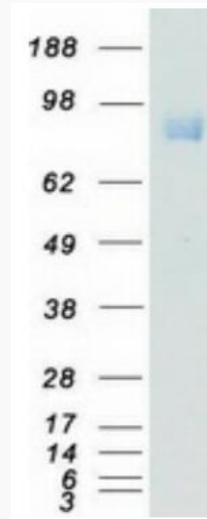
**MIM** 606945

**UniProt ID** P01130

 Tel: 1-631-559-9269 1-516-512-3133

 Email: [info@creative-biomart.com](mailto:info@creative-biomart.com)  Fax: 1-631-938-8127

 45-1 Ramsey Road, Shirley, NY 11967, USA



Coomassie blue staining of purified LDLR protein.

 Tel: 1-631-559-9269 1-516-512-3133

 Email: [info@creative-biomart.com](mailto:info@creative-biomart.com)  Fax: 1-631-938-8127

 45-1 Ramsey Road, Shirley, NY 11967, USA