

Recombinant Human LDLR protein, His-Avi-tagged

Cat. No. LDLR-4431H Lot. No. (See product label)

SPECIFICATION

Product Overview	Recombinant Human LDLR protein(P01130-1)(Ala22-Arg788), fused with C-terminal His and Avi tag, was expressed in HEK293.
Species	Human
Source	C-His-Avi
ProteinLength	Ala22-Arg788
Tag	C-His-Avi
Form	Lyophilized from 0.22µm filtered solution in PBS (pH 7.4). Normally 8% trehalose is added as protectant before lyophilization.
Bio-activity	Human LDLR, His Tag immobilized on CM5 Chip can bind Human PCSK9, His Tag with an affinity constant of 0.35 nM as determined in SPR assay (Biacore T200).
Molecular Mass	The protein has a predicted MW of 87.6 kDa, Due to glycosylation, the protein migrates to 110-130 kDa based on Tris-Bis PAGE result.
Endotoxin	Less than 1EU per µg by the LAL method.
Purity	> 95% as determined by Tris-Bis PAGE.
Storage	Reconstituted protein stable at -80°C for 12 months, 4°C for 1 week. Use a manual

 Tel: 1-631-559-9269 1-516-512-3133

 Email: info@creative-biomart.com  Fax: 1-631-938-8127

 45-1 Ramsey Road, Shirley, NY 11967, USA

defrost freezer and avoid repeated freeze-thaw cycles.

Reconstitution

Centrifuge tubes before opening. Reconstituting to a concentration more than 100 µg/ml is recommended. Dissolve the lyophilized protein in distilled water.

GENE INFORMATION

Gene Name [LDLR low density lipoprotein receptor \[Homo sapiens \]](#)

Official Symbol [LDLR](#)

Synonyms LDLR; low density lipoprotein receptor; low-density lipoprotein receptor; familial hypercholesterolemia; LDL receptor; low-density lipoprotein receptor class A domain-containing protein 3; FH; FHC; LDLCQ2;

Gene ID [3949](#)

mRNA Refseq [NM_000527](#)

Protein Refseq [NP_000518](#)

MIM [606945](#)

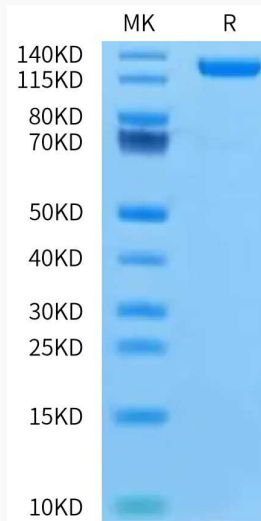
UniProt ID [P01130](#)

 Tel: 1-631-559-9269 1-516-512-3133

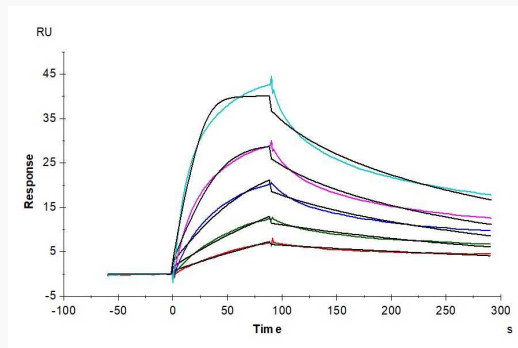
 Email: info@creative-biomart.com  Fax: 1-631-938-8127

 45-1 Ramsey Road, Shirley, NY 11967, USA

Tris-Bis PAGE



SPR



 Tel: 1-631-559-9269 1-516-512-3133

 Email: info@creative-biomart.com  Fax: 1-631-938-8127

 45-1 Ramsey Road, Shirley, NY 11967, USA