

Recombinant Human LDLR Protein (Ala22-Arg788), C-His tagged

Cat. No. LDLR-4432H Lot. No. (See product label)

SPECIFICATION

Product Overview	Recombinant human LDLR (Ala22-Arg788) fused with the C-terminal His tag was expressed in Mammalian cells.
Species	Human
Source	Mammalian Cells
ProteinLength	Ala22-Arg788
Form	Lyophilized powder/frozen liquid
Molecular Mass	84.37 kDa
Endotoxin	< 1.0 EU/μg of the protein as determined by the LAL method.
Purity	>90% as determined by SDS-PAGE.
Notes	For research use only.
Storage	Use a manual defrost freezer and avoid repeated freeze thaw cycles. Store at 2 to 8 centigrade for one week. Store at -20 to -80 centigrade for twelve months from the date of receipt.
Storage Buffer	Supplied as solution form in PBS or lyophilized from PBS.

 Tel: 1-631-559-9269 1-516-512-3133

 Email: info@creative-biomart.com  Fax: 1-631-938-8127

 45-1 Ramsey Road, Shirley, NY 11967, USA

Reconstitution Reconstitute in sterile water for a stock solution.

Shipping They are shipped out with dry ice/blue ice unless customers require otherwise.

GENE INFORMATION

Gene Name [LDLR low density lipoprotein receptor \[Homo sapiens \(human\) \]](#)

Official Symbol [LDLR](#)

Synonyms LDLR; low density lipoprotein receptor; low-density lipoprotein receptor; familial hypercholesterolemia; LDL receptor; low-density lipoprotein receptor class A domain-containing protein 3; FH; FHC; LDLCQ2;

Gene ID [3949](#)

mRNA Refseq [NM_000527](#)

Protein Refseq [NP_000518](#)

MIM [606945](#)

UniProt ID [P01130](#)

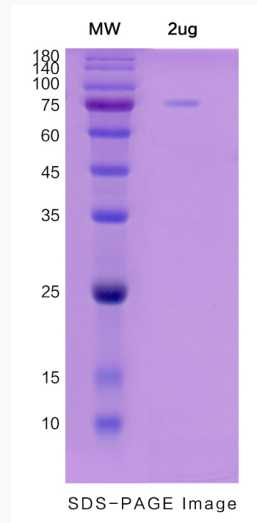
 Tel: 1-631-559-9269 1-516-512-3133

 Email: info@creative-biomart.com  Fax: 1-631-938-8127

 45-1 Ramsey Road, Shirley, NY 11967, USA



SDS-PAGE



Tel: 1-631-559-9269 1-516-512-3133

Email: info@creative-biomart.com Fax: 1-631-938-8127

45-1 Ramsey Road, Shirley, NY 11967, USA