

Recombinant Human LEF1 Protein (Glu45-His260), N-His tagged

Cat. No. LEF1-4817H Lot. No. (See product label)

SPECIFICATION

Product Overview	Recombinant human LEF1 (Glu45-His260) fused with the N-His tag was expressed in E. coli.
Species	Human
Source	E.coli
ProteinLength	Glu45-His260
Form	Lyophilized powder/frozen liquid
Molecular Mass	25.64 kDa
Purity	>90% as determined by SDS-PAGE.
Notes	For research use only.
Storage	Use a manual defrost freezer and avoid repeated freeze thaw cycles. Store at 2 to 8 centigrade for one week. Store at -20 to -80 centigrade for twelve months from the date of receipt.
Storage Buffer	0.01M PBS, pH 7.4, 0.02% NLS
Reconstitution	Reconstitute in sterile water for a stock solution.

 Tel: 1-631-559-9269 1-516-512-3133

 Email: info@creative-biomart.com  Fax: 1-631-938-8127

 45-1 Ramsey Road, Shirley, NY 11967, USA

Shipping

They are shipped out with dry ice/blue ice unless customers require otherwise.

GENE INFORMATION
Gene Name

LEF1 lymphoid enhancer-binding factor 1 [Homo sapiens (human)]

Official Symbol

LEF1

Synonyms

LEF1; lymphoid enhancer-binding factor 1; TCF1ALPHA; TCF7L3; TCF10; TCF1-alpha; T cell-specific transcription factor 1-alpha; LEF-1; FLJ46390; DKFZp586H0919;

Gene ID

51176

mRNA Refseq

NM_001130713

Protein Refseq

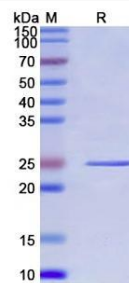
NP_001124185

MIM

153245

UniProt ID

Q9UJU2

SDS-PAGE


 Tel: 1-631-559-9269 1-516-512-3133

 Email: info@creative-biomart.com  Fax: 1-631-938-8127

 45-1 Ramsey Road, Shirley, NY 11967, USA