

Recombinant Human LEF1 protein, His-tagged

Cat. No. LEF1-7687H **Lot. No.** (See product label)

SPECIFICATION

Product Overview	Recombinant Human LEF1 protein(1-98 aa), fused with N-terminal His tag, was expressed in E. coli.
Species	Human
Source	E. coli
ProteinLength	1-98 aa
Form	The purified protein was lyophilized from sterile phosphate-buffered saline (PBS: 58 mM Na ₂ HPO ₄ , 17 mM NaH ₂ PO ₄ , 68 mM NaCl, pH 7.4). Prior to lyophilization, 5% (w/v) trehalose and 5% (w/v) mannitol were incorporated as cryoprotective excipients. The protein was eluted with a buffer containing 300 mM imidazole.
AASequence	MPQLSGGGGGGGDPELCATDEMIPFKDEGDPQKEKIFAEISHPEEEGDLADIKSSL VNESEIIPASNGHEVARQAQTSQEPYHDKAREHPDDGKHPD
Purity	85%, by SDS-PAGE.
Storage	Store at 2-8°C for 1-2 weeks. Aliquot and store at -20°C to -80°C for up to 3 months, reconstitution with sterile water and addition of an equal volume of glycerol. Avoid repeat freeze-thaw cycles.
Reconstitution	It is recommended that sterile water be added to the vial to prepare a stock solution of 0.25 ug/ul. Centrifuge the vial at 4°C before opening to recover the entire contents.

 Tel: 1-631-559-9269 1-516-512-3133

 Email: info@creative-biomart.com  Fax: 1-631-938-8127

 45-1 Ramsey Road, Shirley, NY 11967, USA

GENE INFORMATION

Gene Name LEF1 lymphoid enhancer-binding factor 1 [Homo sapiens]

Official Symbol LEF1

Synonyms LEF1; lymphoid enhancer-binding factor 1; TCF1ALPHA; TCF7L3; TCF10; TCF1-alpha; T cell-specific transcription factor 1-alpha; LEF-1; FLJ46390; DKFZp586H0919;

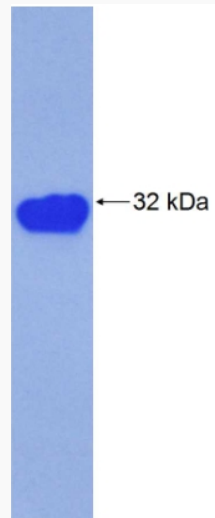
mRNA Refseq [NM_001130713](#)


Protein Refseq [NP_001124185](#)

UniProt ID [Q9UJU2](#)

Gene ID 51176

SDS-PAGE



 Tel: 1-631-559-9269 1-516-512-3133

 Email: info@creative-biomart.com  Fax: 1-631-938-8127

 45-1 Ramsey Road, Shirley, NY 11967, USA