

Recombinant Full Length Human LEO1 Protein, C-Flag-tagged

Cat. No. LEO1-2081HFL Lot. No. (See product label)

SPECIFICATION

Product Overview	Recombinant Full Length Human LEO1 Protein, fused to Flag-tag at C-terminus, was expressed in Mammalian cells.
Species	Human
Source	Mammalian Cells
Description	LEO1, parafibromin (CDC73; MIM 607393), CTR9 (MIM 609366), and PAF1 (MIM 610506) form the PAF protein complex that associates with the RNA polymerase II subunit POLR2A (MIM 180660) and with a histone methyltransferase complex.
Form	25 mM Tris HCl, pH 7.3, 100 mM glycine, 10% glycerol.
Molecular Mass	75.2 kDa
AA Sequence	MADMEDLFGSDADSEAERKDSDSGSDSDSDQENAASGSNASGSESDQDERGDSG QPSNKELFGDDSEDEG ASHHSGSDNHSESDNRSEASERSDHEDNDPSDQHS GSEAPNDDDEDEGHRSDGGSHHSEAEGSEKAHS DDEKWGREDKSDQSDDEKIQN SDDEERAQGSDEDKLNSDDEKMQNTDDEERPQLSDDERQQLSEEEKA NSDDE RPVASDNDDEKQNSDDEEQPQLSDEEKMQNSDDER PQASDEEHRHSDDEEEQDH KSESARGSDSE DEVLRMKRKNAIASDSEADSDTEVPKDNSGTMDLFGGADDISSG SDGEDKPPTPGQPVDENGLPQDQQEE EPIPETRIEVEIPKVNTDLGNDLYFVKLPNF LSVEPRPFDPPQYYEDEFEDEEMLDEEGRTRLKLVKVENTI RWRIRRDEEGNEIKESN ARIVKWS DGSM SLHLGNEVFDVYKAPLQGDHNHLFIRQGTGLQGQAVFKTKLT FRP HSTDSATHRKMTLSLADRCSKTQKIRILPMAGRDPPECQRTEMIKKEEERLRASIRRE

Tel: 1-631-559-9269 1-516-512-3133

Email: info@creative-biomart.com Fax: 1-631-938-8127

45-1 Ramsey Road, Shirley, NY 11967, USA

SQQRMRKQ HQRGLSASYLEPDRYDEEEEGEESISLAAIKNRYKGGIREERARIY
 SSDSDEGSEEDKAQRLLKAKKLTS DEEGEPSGKRKAEDDDKANKKHKKYVISDEEE
 EDDD TRTRPLEQKLISEEDLAANDILDYKDDDDKV

Purity > 80% as determined by SDS-PAGE and Coomassie blue staining.

Stability Stable for 12 months from the date of receipt of the product under proper storage and handling conditions. Avoid repeated freeze-thaw cycles.

Storage Store at -80 centigrade.

Concentration >50 ug/mL as determined by microplate BCA method.

Preparation Recombinant protein was captured through anti-DDK affinity column followed by conventional chromatography steps.

Full Length Full L.

GENE INFORMATION

Gene Name [LEO1](#) [LEO1 homolog, Paf1/RNA polymerase II complex component \[Homo sapiens \(human\) \]](#)

Official Symbol [LEO1](#)

Synonyms [RDL](#)

Gene ID [123169](#)

mRNA Refseq [NM_138792.4](#)

 Tel: 1-631-559-9269 1-516-512-3133

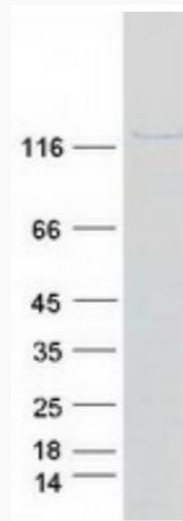
 Email: info@creative-biomart.com  Fax: 1-631-938-8127

 45-1 Ramsey Road, Shirley, NY 11967, USA

Protein Refseq NP_620147.1

MIM 610507

UniProt ID Q8WVC0



Coomassie blue staining of purified LEO1 protein.

 Tel: 1-631-559-9269 1-516-512-3133

 Email: info@creative-biomart.com  Fax: 1-631-938-8127

 45-1 Ramsey Road, Shirley, NY 11967, USA