

Recombinant Human LEO1 Protein, Myc/DDK-tagged, C13 and N15-labeled

Cat. No. LEO1-5824H **Lot. No.** (See product label)

SPECIFICATION

Product Overview	LEO1 MS Standard C13 and N15-labeled recombinant protein (NP_620147) with a C-terminal MYC/DDK tag, was expressed in HEK293 cells.
Species	Human
Source	HEK293
Description	LEO1, parafibromin (CDC73), CTR9, and PAF1 form the PAF protein complex that associates with the RNA polymerase II subunit POLR2A and with a histone methyltransferase complex.
Molecular Mass	75.4 kDa
AA Sequence	MADMEDLFGSDADSEAERKDSDSGSDSDSDQENAASGSNASGSESDQDERGDSG QPSNKELFGDDSEDEGASHHSGSDNHSESDNRSEASERSDHEDNDPSDVDQHS GSEAPNDDDEDEGHRSDGGSHHSEAEGSEKAHSDDEKWGREDKSDQSDDEKIQNS DDEERAQGSDEDKLQNSDDDEKMQNTDDEERPQLSDDERQQLSEEEKANSDDER PVASDNDDEKQNSDDEEQPQLSDEEKMQNSDDERPQASDEEHRHSDDEEEQDHK SESARGSDSEDEVLRMKRKNAIASDSEADSDTEVPKDNSGTMDLFGGADDISSGSD GEDKPPTPGQPVDENGLPQDQEQEEPIPETRIEVEIPKVNTDLGNDLYFVKLPNFLS VEPRPFDPPQYYEDEFEDEEMLDEEGRTRLKLVKVENTIRWRIRRDEEGNEIKESNARI VKWSDGSMHLHLGNEVFDVYKAPLQGDHNLHFLIRQGTGLQGQAVFKTKLTFRPHST DSATHRKMTLSLADRCSTKQKIRILPMAGRDPECQRTEMIKKEEERLRASIRRESQQ

 Tel: 1-631-559-9269 1-516-512-3133

 Email: info@creative-biomart.com  Fax: 1-631-938-8127

 45-1 Ramsey Road, Shirley, NY 11967, USA



RRMREKQHQQRGLSASYLEPDRYDEEEEGEESISLAAIKNRYKGGIREERARIYSSDS
 DEGSEEDKAQRLLKAKKLTSDDEEGEPGKRKAEDDDKANKKHKKYVISDEEEEDDD
 TRTRPLEQKLISEEDLAANDILDYKDDDDKV

Purity > 80% as determined by SDS-PAGE and Coomassie blue staining

Stability Stable for 3 months from receipt of products under proper storage and handling conditions.

Storage Store at -80 centigrade. Avoid repeated freeze-thaw cycles.

Concentration 50 µg/mL as determined by BCA

Storage Buffer 100 mM glycine, 25 mM Tris-HCl, pH 7.3.

GENE INFORMATION

Gene Name LEO1 LEO1 homolog, Paf1/RNA polymerase II complex component [Homo sapiens (human)]

Official Symbol LEO1

Synonyms LEO1; Leo1, Paf1/RNA polymerase II complex component, homolog (S. cerevisiae); RNA polymerase-associated protein LEO1; replicative senescence down-regulated leo1-like protein; RDL;

Gene ID 123169

mRNA Refseq NM_138792

Protein Refseq NP_620147

Tel: 1-631-559-9269 1-516-512-3133

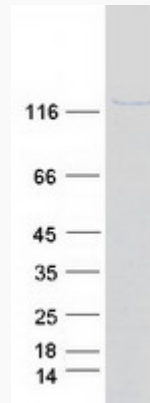
Email: info@creative-biomart.com Fax: 1-631-938-8127

45-1 Ramsey Road, Shirley, NY 11967, USA

MIM 610507

UniProt ID Q8WVC0

SDS-PAGE



 Tel: 1-631-559-9269 1-516-512-3133

 Email: info@creative-biomart.com  Fax: 1-631-938-8127

 45-1 Ramsey Road, Shirley, NY 11967, USA