

## Recombinant Human LEP Protein, Myc/DDK-tagged

Cat. No. LEP-01H Lot. No. (See product label)

### SPECIFICATION

**Product Overview** Recombinant protein of human leptin (LEP) with a C-Myc/DDK tag was expressed in HEK293T.

**Species** Human

**Source** HEK293

**Description** This gene encodes a protein that is secreted by white adipocytes into the circulation and plays a major role in the regulation of energy homeostasis. Circulating leptin binds to the leptin receptor in the brain, which activates downstream signaling pathways that inhibit feeding and promote energy expenditure. This protein also has several endocrine functions, and is involved in the regulation of immune and inflammatory responses, hematopoiesis, angiogenesis, reproduction, bone formation and wound healing. Mutations in this gene and its regulatory regions cause severe obesity and morbid obesity with hypogonadism in human patients. A mutation in this gene has also been linked to type 2 diabetes mellitus development.

**Molecular Mass** 16 kDa

**Purity** > 80% as determined by SDS-PAGE and Coomassie blue staining

**Stability** Stable for 12 months from the date of receipt of the product under proper storage and handling conditions. Avoid repeated freeze-thaw cycles.

**Storage** Store at -80 centigrade.

 Tel: 1-631-559-9269 1-516-512-3133

 Email: [info@creative-biomart.com](mailto:info@creative-biomart.com)  Fax: 1-631-938-8127

 45-1 Ramsey Road, Shirley, NY 11967, USA

**Concentration** >50 µg/mL as determined by microplate BCA method

**Storage Buffer** 25 mM Tris.HCl, pH 7.3, 100 mM glycine, 10% glycerol

## GENE INFORMATION

**Gene Name** LEP leptin [ Homo sapiens (human) ]

**Official Symbol** LEP

**Synonyms** LEP; leptin; OB; OBS; LEPD; leptin; leptin (murine obesity homolog); leptin (obesity homolog, mouse); obese protein; obese, mouse, homolog of; obesity factor

**Gene ID** 3952

**mRNA Refseq** NM\_000230

**Protein Refseq** NP\_000221

**MIM** 164160

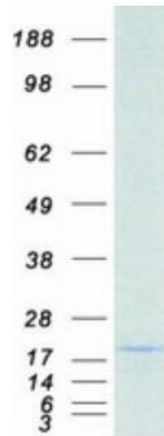
**UniProt ID** P41159

 Tel: 1-631-559-9269 1-516-512-3133

 Email: [info@creative-biomart.com](mailto:info@creative-biomart.com)  Fax: 1-631-938-8127

 45-1 Ramsey Road, Shirley, NY 11967, USA

**SDS-PAGE**



 Tel: 1-631-559-9269 1-516-512-3133

 Email: [info@creative-biomart.com](mailto:info@creative-biomart.com)  Fax: 1-631-938-8127

 45-1 Ramsey Road, Shirley, NY 11967, USA