

## Recombinant Feline LEP Protein, His tagged

Cat. No. LEP-09F Lot. No. (See product label)

### SPECIFICATION

<b>Product Overview</b>	Recombinant Feline LEP Protein, Sourced from E.coli, Val22-Cys167, with N-terminal His Tag.
<b>Species</b>	Feline
<b>Source</b>	E.coli
<b>ProteinLength</b>	22-167 aa
<b>Description</b>	Leptin is a hormone mainly secreted from white adipose tissue. Leptin levels positively correlate to the amount of body fat and circulating levels reflect the amount of energy stored in fat. It acts in a negative feedback loop where rising leptin levels decrease appetite therefore leptin resistance has been noted in obese patients.
<b>Form</b>	Lyophilized from 1x PBS with Trehalose
<b>Molecular Mass</b>	18.4kDa
<b>Purity</b>	>95% by SDS-PAGE
<b>Applications</b>	ELISA and Western Blot Analysis
<b>Storage</b>	5 years at -20 to -80 centigrade as supplied. Upon reconstitution: 5 years at -80 centigrade; 2 years at -20 centigrade For long-term storage, store for up to 2 years at -20 centigrade and 5 years at -80 centigrade after reconstitution. Expiration is 2 years

 Tel: 1-631-559-9269 1-516-512-3133

 Email: [info@creative-biomart.com](mailto:info@creative-biomart.com)  Fax: 1-631-938-8127

 45-1 Ramsey Road, Shirley, NY 11967, USA

from date of receipt.

**Shipping**

Ambient

**Reconstitution**

Reconstitute in 1 mL in sterile PBS containing at least 0.1% protein.

**GENE INFORMATION****Gene Name**

LEP leptin [ *Felis catus* (domestic cat) ]

**Official Symbol**

LEP

**Synonyms**

LEP; leptin; ob; leptin; obesity factor

**Gene ID**

493838

**mRNA Refseq**

NM\_001009850

**Protein Refseq**

NP\_001009850

**UniProt ID**

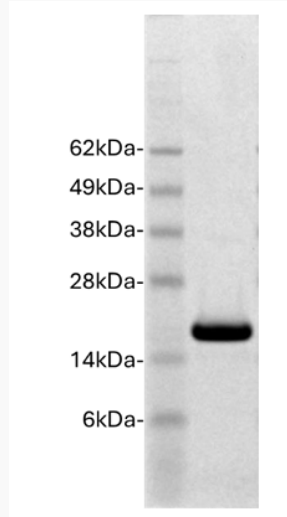
Q9N2C1

 Tel: 1-631-559-9269 1-516-512-3133

 Email: [info@creative-biomart.com](mailto:info@creative-biomart.com)  Fax: 1-631-938-8127

 45-1 Ramsey Road, Shirley, NY 11967, USA

**SDS-PAGE**



Feline Leptin (2 $\mu$ g) on a Coomassie stained 4-12% SDS-PAGE gel, reducing conditions.

 Tel: 1-631-559-9269 1-516-512-3133

 Email: [info@creative-biomart.com](mailto:info@creative-biomart.com)  Fax: 1-631-938-8127

 45-1 Ramsey Road, Shirley, NY 11967, USA