

Active Recombinant Human LEP protein

Cat. No. LEP-1272H **Lot. No.** (See product label)

SPECIFICATION

Product Overview	Active Recombinant Human LEP protein(NP_000221.1) (Val 22-Cys 167) was expressed in E.coli, with an additional Met.
Species	Human
Source	E.coli
ProteinLength	22-167 aa
Form	Lyophilized from sterile PBS, pH 7.4.
Bio-activity	1. Measured by its binding ability in a functional ELISA. Immobilized human Leptin at 1.25 µg/ml (100 µl/well) can bind human Leptin receptor Fc chimera with a linear range of 0.032-4.0 µg/ml. 2. Immobilized human Leptin at 5 µg/ml (100 µl/well) can bind human Leptin receptor his with a linear range of 0.032-4.0 µg/ml.
Molecular Mass	The recombinant human leptin consists of 147 amino acids and predicts a molecular mass of 16 kDa. The apparent molecular mass of rhLEP is approximately 13 kDa in SDS-PAGE under reducing conditions.
Purity	> 98 % as determined by SDS-PAGE
Storage	Store it under sterile conditions at -20°C to -80°C upon receiving. Recommend to aliquot the protein into smaller quantities for optimal storage. Avoid repeated freeze-thaw cycles.

 Tel: 1-631-559-9269 1-516-512-3133

 Email: info@creative-biomart.com  Fax: 1-631-938-8127

 45-1 Ramsey Road, Shirley, NY 11967, USA

Reconstitution It is recommended that sterile water be added to the vial to prepare a stock solution of 0.2 ug/ul. Centrifuge the vial at 4°C before opening to recover the entire contents.

GENE INFORMATION

Gene Name LEP leptin [Homo sapiens]

Official Symbol LEP

Synonyms LEP; leptin; leptin (murine obesity homolog) , leptin (obesity homolog, mouse) , OB, OBS; obese protein; obesity factor; obese, mouse, homolog of; leptin (murine obesity homolog); leptin (obesity homolog, mouse); OB; OBS; FLJ94114;

Gene ID 3952

mRNA Refseq NM_000230

Protein Refseq NP_000221

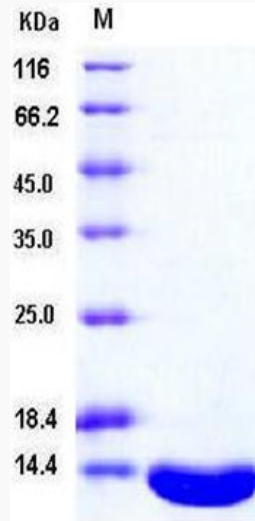
UniProt ID P41159

 Tel: 1-631-559-9269 1-516-512-3133

 Email: info@creative-biomart.com  Fax: 1-631-938-8127

 45-1 Ramsey Road, Shirley, NY 11967, USA

SDS-PAGE



 Tel: 1-631-559-9269 1-516-512-3133

 Email: info@creative-biomart.com  Fax: 1-631-938-8127

 45-1 Ramsey Road, Shirley, NY 11967, USA