

Recombinant Human LEP protein

Cat. No. LEP-189H Lot. No. (See product label)

SPECIFICATION

Product Overview	Recombinant Human LEP was expressed in E. coli.
Species	Human
Source	E.coli
Description	Leptin is a cytokine found in the adipose tissue of animals (Leptin mRNA is restricted to the adipose tissue). Leptin has been shown to suppress appetite, increase thermogenesis and reduce body weight, food consumption and plasma glucose levels.
Form	Lyophilized from a 0.2 µm filtered solution in Tris-HCl and NaCl.
Molecular Mass	16.4 kDa
Endotoxin	<1.0 EU/µg of recombinant protein as determined by the LAL method.
Purity	95%
Applications	Cell Assay
Storage	The lyophilized protein is stable for at least one year from date of receipt at -70 centigrade. Upon reconstitution, this cytokine can be stored in working aliquots at 2 centigrade- 8 centigrade for one month, or at -20 centigrade for six months, with a carrier protein without detectable loss of activity. Avoid repeated freeze/thaw cycles.

 Tel: 1-631-559-9269 1-516-512-3133

 Email: info@creative-biomart.com  Fax: 1-631-938-8127

 45-1 Ramsey Road, Shirley, NY 11967, USA

Reconstitution Reconstitute at 1 mg/mL in sterile 20 mM Tris-HCl (pH 8.0).

GENE INFORMATION

Gene Name LEP leptin [Homo sapiens]

Official Symbol LEP

Synonyms LEP; leptin; leptin (murine obesity homolog) , leptin (obesity homolog, mouse) , OB, OBS; obese protein; obesity factor; obese, mouse, homolog of; leptin (murine obesity homolog); leptin (obesity homolog, mouse); OB; OBS; FLJ94114;

Gene ID 3952

mRNA Refseq NM_000230

Protein Refseq NP_000221

UniProt ID P41159

Chromosome Location 7q31

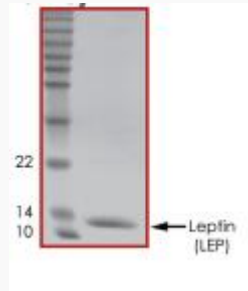
Pathway Adipocytokine signaling pathway, organism-specific biosystem; Adipocytokine signaling pathway, conserved biosystem; Adipogenesis, organism-specific biosystem; Cytokine-cytokine receptor interaction, organism-specific biosystem; Cytokine-cytokine receptor interaction, conserved biosystem; Developmental Biology, organism-specific biosystem; Diabetes pathways, organism-specific biosystem;

Function growth factor activity; hormone activity; peptide hormone receptor binding;

 Tel: 1-631-559-9269 1-516-512-3133

 Email: info@creative-biomart.com  Fax: 1-631-938-8127

 45-1 Ramsey Road, Shirley, NY 11967, USA



 Tel: 1-631-559-9269 1-516-512-3133

 Email: info@creative-biomart.com  Fax: 1-631-938-8127

 45-1 Ramsey Road, Shirley, NY 11967, USA