

Recombinant Rhesus Macaque LEP Protein, His-tagged

Cat. No. LEP-2496R **Lot. No.** (See product label)

SPECIFICATION

Product Overview	Recombinant Rhesus Macaque LEP Protein (22-167 aa) with His tag was expressed in HEK293.
Species	Rhesus Macaque
Source	HEK293
ProteinLength	22-167 aa
Description	This gene encodes of member of the non-receptor class 4 subfamily of the protein-tyrosine phosphatase family. The encoded protein is a lymphoid-specific intracellular phosphatase that associates with the molecular adapter protein CBL and may be involved in regulating CBL function in the T-cell receptor signaling pathway. Mutations in this gene may be associated with a range of autoimmune disorders including Type 1 Diabetes, rheumatoid arthritis, systemic lupus erythematosus and Graves' disease. Alternatively spliced transcript variants encoding distinct isoforms have been described.
Form	Sterile PBS, pH7.4, 0.2%SKL
Molecular Mass	17 kDa
AASequence	VPIQKVQSDTKLIKTIVTRINDISHTQSVSSKQRVTGLDFIPGLHPVLTLSQMDQTLAI YQQILINLPSRNVIQISNDLENLRDLLHLLAFSKSCHLPLASGLETLES LGDVLEASLYS TEVVALSRLQGSLQDMLWQLDLSPGCHHHHHHHH

 Tel: 1-631-559-9269 1-516-512-3133

 Email: info@creative-biomart.com  Fax: 1-631-938-8127

 45-1 Ramsey Road, Shirley, NY 11967, USA

Endotoxin	< 1 EU/μg by LAL
Purity	> 85% by SDS-PAGE
Storage	Store it under sterile conditions at -20 to -80 centigrade. It is recommended that the protein be aliquoted for optimal storage. Avoid repeated freeze-thaw cycles.
Concentration	1 mg/mL by BCA

GENE INFORMATION

Gene Name	PTPN22 protein tyrosine phosphatase non-receptor type 22 [Homo sapiens (human)]
Official Symbol	LEP
Synonyms	PTPN22; protein tyrosine phosphatase non-receptor type 22; LYP; PEP; LYP1; LYP2; PTPN8; PTPN22.5; PTPN22.6; tyrosine-protein phosphatase non-receptor type 22; PEST-domain phosphatase; hematopoietic cell protein-tyrosine phosphatase 70Z-PEP; lymphoid-specific protein tyrosine phosphatase; protein tyrosine phosphatase, non-receptor type 22 (lymphoid); protein tyrosine phosphatase, non-receptor type 8; EC 3.1.3.48
Gene ID	26191
mRNA Refseq	NM_015967
Protein Refseq	NP_057051
MIM	600716

 Tel: 1-631-559-9269 1-516-512-3133

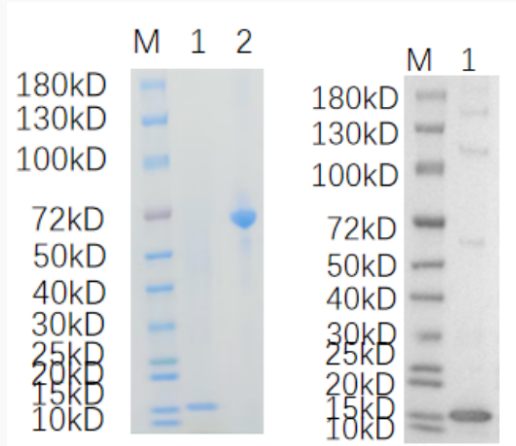
 Email: info@creative-biomart.com  Fax: 1-631-938-8127

 45-1 Ramsey Road, Shirley, NY 11967, USA

UniProt ID

Q9Y2R2

SDS-PAGE and WB



Reducing 4%-20% SDS-PAGE (CBB stained) and WB (Anti-His Mouse Monoclonal antibody) analysis profiles of purified LEP. 1. LEP: 1 µg 2. BSA: 1 µg

 Tel: 1-631-559-9269 1-516-512-3133

 Email: info@creative-biomart.com  Fax: 1-631-938-8127

 45-1 Ramsey Road, Shirley, NY 11967, USA