

Recombinant Rhesus monkey LEP Protein, His-tagged

Cat. No. LEP-2725R **Lot. No.** (See product label)

SPECIFICATION

Product Overview	Recombinant Rhesus monkey LEP Protein (Val22-Cys167) with N-His tag was expressed in E. coli.
Species	Rhesus macaque
Source	E.coli
ProteinLength	Val22-Cys167
Description	Key player in the regulation of energy balance and body weight control. Once released into the circulation, has central and peripheral effects by binding LEPR, found in many tissues, which results in the activation of several major signaling pathways
Form	Freeze-dried powder
Molecular Mass	Predicted Molecular Mass: 19.8 kDa Accurate Molecular Mass: 20 kDa
Purity	> 90%
Applications	Positive Control; Immunogen; SDS-PAGE; WB.
Stability	The thermal stability is described by the loss rate. The loss rate was determined by accelerated thermal degradation test, that is, incubate the protein at 37 centigrade for

 Tel: 1-631-559-9269 1-516-512-3133

 Email: info@creative-biomart.com  Fax: 1-631-938-8127

 45-1 Ramsey Road, Shirley, NY 11967, USA

48h, and no obvious degradation and precipitation were observed. The loss rate is less than 5% within the expiration date under appropriate storage condition.

Storage

Avoid repeated freeze/thaw cycles. Store at 2-8 centigrade for one month. Aliquot and store at -80 centigrade for 12 months.

Storage Buffer

20mM Tris, 150mM NaCl, pH8.0, containing 1mM EDTA, 1mM DTT, 0.01% SKL, 5% Trehalose and Proclin300.

Reconstitution

Reconstitute in 20mM Tris, 150mM NaCl (pH8.0) to a concentration of 0.1-1.0 mg/mL. Do not vortex.

GENE INFORMATION

Gene Name

LEP leptin [*Macaca mulatta* (Rhesus monkey)]

Official Symbol

LEP

Synonyms

LEP; leptin; OB; leptin; obesity factor

Gene ID

698728

mRNA Refseq

NM_001042755

Protein Refseq

NP_001036220

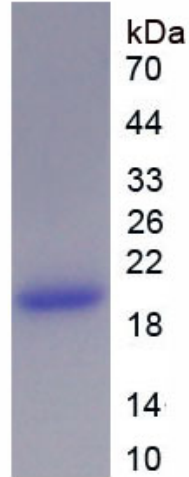
UniProt ID

Q28504

 Tel: 1-631-559-9269 1-516-512-3133

 Email: info@creative-biomart.com  Fax: 1-631-938-8127

 45-1 Ramsey Road, Shirley, NY 11967, USA



 Tel: 1-631-559-9269 1-516-512-3133

 Email: info@creative-biomart.com  Fax: 1-631-938-8127

 45-1 Ramsey Road, Shirley, NY 11967, USA