

Recombinant Human LEP Protein, Myc/DDK-tagged, C13 and N15-labeled

Cat. No. LEP-3523H **Lot. No.** (See product label)

SPECIFICATION

Product Overview

LEP MS Standard C13 and N15-labeled recombinant protein (NP_000221) with a C-terminal MYC/DDK tag, was expressed in HEK293 cells.

Species

Human

Source

HEK293

Description

This gene encodes a protein that is secreted by white adipocytes into the circulation and plays a major role in the regulation of energy homeostasis. Circulating leptin binds to the leptin receptor in the brain, which activates downstream signaling pathways that inhibit feeding and promote energy expenditure. This protein also has several endocrine functions, and is involved in the regulation of immune and inflammatory responses, hematopoiesis, angiogenesis, reproduction, bone formation and wound healing. Mutations in this gene and its regulatory regions cause severe obesity and morbid obesity with hypogonadism in human patients. A mutation in this gene has also been linked to type 2 diabetes mellitus development.

Molecular Mass

18.6 kDa

AA Sequence

MHWGTLGFLWLWPYLFYVQAVPIQKVQDDTKLIKTIVTRINDISHTQSVSSKQKVT
GLDFIPGLHPILTLKMDQTLAVYQQILTSMPSRNVIQISNDLENLRDLLHVLAFSKSC
HLPWASGLETLDLGGVLEASGYSTEVALSRLQGSLQDMLWQLDLSPGCTRTRPL
EQKLISEEDLAANDILDYKDDDDKV

 Tel: 1-631-559-9269 1-516-512-3133

 Email: info@creative-biomart.com  Fax: 1-631-938-8127

 45-1 Ramsey Road, Shirley, NY 11967, USA

Purity	> 80% as determined by SDS-PAGE and Coomassie blue staining
Stability	Stable for 3 months from receipt of products under proper storage and handling conditions.
Storage	Store at -80 centigrade. Avoid repeated freeze-thaw cycles.
Concentration	50 µg/mL as determined by BCA
Storage Buffer	100 mM glycine, 25 mM Tris-HCl, pH 7.3.

GENE INFORMATION

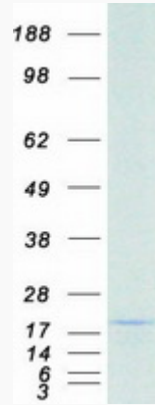
Gene Name	LEP leptin [Homo sapiens (human)]
Official Symbol	LEP
Synonyms	LEP; leptin; leptin (murine obesity homolog), leptin (obesity homolog, mouse), OB, OBS; obese protein; obesity factor; obese, mouse, homolog of; leptin (murine obesity homolog); leptin (obesity homolog, mouse); OB; OBS; FLJ94114;
Gene ID	3952
mRNA Refseq	NM_000230
Protein Refseq	NP_000221
MIM	164160
UniProt ID	P41159

 Tel: 1-631-559-9269 1-516-512-3133

 Email: info@creative-biomart.com  Fax: 1-631-938-8127

 45-1 Ramsey Road, Shirley, NY 11967, USA

SDS-PAGE



 Tel: 1-631-559-9269 1-516-512-3133

 Email: info@creative-biomart.com  Fax: 1-631-938-8127

 45-1 Ramsey Road, Shirley, NY 11967, USA