

Recombinant Horse LEP protein, His & T7-tagged

Cat. No. LEP-673H Lot. No. (See product label)

SPECIFICATION

Product Overview	Recombinant Horse LEP aa. (Ile15~Ala141 (Accession # Q9TU09)) fused with N-terminal His & T7 tag was produced in E. coli cells.
Species	Horse
Source	E.coli
ProteinLength	Ile15~Ala141
Form	Freeze-dried powder
Molecular Mass	14kDa as determined by SDS-PAGE reducing conditions.
Endotoxin	<1.0EU per 1g (determined by the LAL method)
Purity	>95%
Characteristic	The isoelectric point is 9.4.
Applications	SDS-PAGE; WB; ELISA; IP.
Stability	The thermal stability is described by the loss rate. The loss rate was determined by accelerated thermal degradation test, that is, incubate the protein at 37°C for 48h, and no obvious degradation and precipitation were observed. The loss rate is less than 5% within the expiration date under appropriate storage condition.

 Tel: 1-631-559-9269 1-516-512-3133

 Email: info@creative-biomart.com  Fax: 1-631-938-8127

 45-1 Ramsey Road, Shirley, NY 11967, USA

Storage	Avoid repeated freeze/thaw cycles. Store at 2-8°C for one month. Aliquot and store at -80°C for 12 months.
----------------	--

Storage buffer	Supplied as lyophilized form in 20mM Tris, 150mM NaCl, pH8.0, containing 1mM EDTA, 1mM DTT, 0.01% sarcosyl, 5% trehalose, and preservative.
-----------------------	---

Reconstitution	Reconstitute in ddH ₂ O
-----------------------	------------------------------------

GENE INFORMATION

Gene Name	LEP leptin [Equus caballus (horse)]
------------------	---------------------------------------

Official Symbol	LEP
------------------------	-----

Synonyms	obesity factor; leptin
-----------------	------------------------

Gene ID	100034042
----------------	-----------

mRNA Refseq	NM_001163980.1
--------------------	----------------

Protein Refseq	NP_001157452.1
-----------------------	----------------

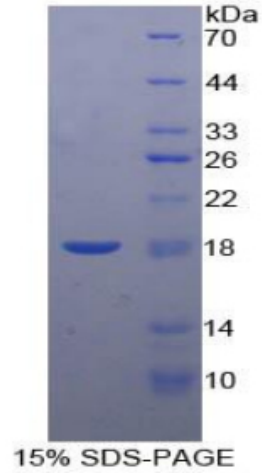
UniProt ID	Q9TU09
-------------------	--------

 Tel: 1-631-559-9269 1-516-512-3133

 Email: info@creative-biomart.com  Fax: 1-631-938-8127

 45-1 Ramsey Road, Shirley, NY 11967, USA

SDS-PAGE



 Tel: 1-631-559-9269 1-516-512-3133

 Email: info@creative-biomart.com  Fax: 1-631-938-8127

 45-1 Ramsey Road, Shirley, NY 11967, USA