

Recombinant Chicken LEP protein, His & S-tagged

Cat. No. LEP-674C Lot. No. (See product label)

SPECIFICATION

Product Overview	Recombinant Chicken LEP aa. (Val19~Cys163 (Accession# O42164)) fused with N-terminal His & S tag was produced in E. coli cells.
Species	Chicken
Source	E.coli
ProteinLength	Val19~Cys163
Form	Freeze-dried powder
Molecular Mass	Predicted Molecular Mass: 22.6kDa
Endotoxin	<1.0EU per 1g (determined by the LAL method)
Purity	>95%
Characteristic	The isoelectric point is 5.
Applications	SDS-PAGE; WB; ELISA; IP.
Stability	The thermal stability is described by the loss rate. The loss rate was determined by accelerated thermal degradation test, that is, incubate the protein at 37°C for 48h, and no obvious degradation and precipitation were observed. The loss rate is less than 5% within the expiration date under appropriate storage condition.

 Tel: 1-631-559-9269 1-516-512-3133

 Email: info@creative-biomart.com  Fax: 1-631-938-8127

 45-1 Ramsey Road, Shirley, NY 11967, USA

Storage	Avoid repeated freeze/thaw cycles. Store at 2-8°C for one month. Aliquot and store at -80°C for 12 months.
Storage buffer	Supplied as lyophilized form in 20mM Tris, 150mM NaCl, pH8.0, containing 1mM EDTA, 1mM DTT, 0.01% sarcosyl, 5% trehalose, and preservative.
Reconstitution	Reconstitute in ddH2O

GENE INFORMATION

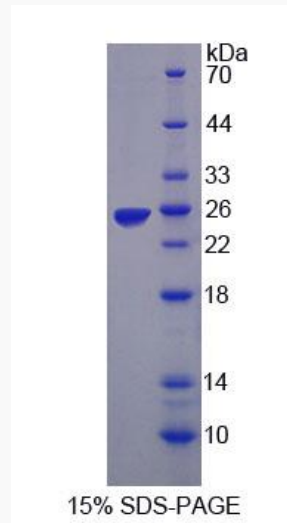
Gene Name	LEP leptin [Gallus gallus (chicken)]
Official Symbol	LEP
Synonyms	OB; leptin; Obesity factor
Gene ID	373955
UniProt ID	O42164

 Tel: 1-631-559-9269 1-516-512-3133

 Email: info@creative-biomart.com  Fax: 1-631-938-8127

 45-1 Ramsey Road, Shirley, NY 11967, USA

SDS-PAGE



 Tel: 1-631-559-9269 1-516-512-3133

 Email: info@creative-biomart.com  Fax: 1-631-938-8127

 45-1 Ramsey Road, Shirley, NY 11967, USA