

Active Recombinant Human LEP protein, His-GST-tagged

Cat. No. LEP-675H Lot. No. (See product label)

SPECIFICATION

Product Overview	Active Recombinant Human LEP protein(P41159)(22~167 aa), fused with N-terminal His tag and GST tag, was expressed in E.coli.
Species	Human
Source	E.coli
ProteinLength	22-167 aa
Form	Lyophilized from sterile PBS, pH7.4, containing 0.01% SKL, 1mM DTT, 5% Trehalose and Proclin300.
Bio-activity	<p>Leptin is a hormone made by adipose cells that helps to regulate energy balance by inhibiting hunger. Many of leptin's effects are mediated through neuropeptide-containing neurons and neuropeptide receptors in the hypothalamus. Although regulation of fat stores is deemed to be the primary function of leptin, it also plays a role in other physiological processes, as evidenced by its multiple sites of synthesis other than fat cells, and the multiple cell types beside hypothalamic cells that have leptin receptors. Besides, Hexokinase 3, White Cell (HK3) has been identified as an interactor of LEP, thus a binding ELISA assay was conducted to detect the interaction of recombinant human LEP and recombinant human HK3. Briefly, LEP were diluted serially in PBS, with 0.01% BSA (pH 7.4). Duplicate samples of 100uL were then transferred to HK3-coated microtiter wells and incubated for 2h at 37°C. Wells were washed with PBST and incubated for 1h with anti-LEPpAb, then aspirated and</p>

 Tel: 1-631-559-9269 1-516-512-3133

 Email: info@creative-biomart.com  Fax: 1-631-938-8127

 45-1 Ramsey Road, Shirley, NY 11967, USA

washed 3 times. After incubation with HRP labelled secondary antibody, wells were aspirated and washed 3 times. With the addition of substrate solution, wells were incubated 15-25 minutes at 37°C. Finally, add 50µ stop solution to the wells and read at 450nm immediately. The binding activity of LEP and HK3 was shown, and this effect was in a dose dependent manner.

Molecular Mass 46.0kDa

Purity > 90% as determined by SDS-PAGE.

Storage Avoid repeated freeze/thaw cycles. Store at -20°C for 12 months. Aliquot and store at -80°C for 12 months.

Reconstitution Reconstitute in 10mM PBS (pH7.4) to a concentration of 0.1-1.0 mg/mL. Do not vortex.

GENE INFORMATION

Gene Name LEP leptin [Homo sapiens]

Official Symbol LEP

Synonyms LEP; leptin; leptin (murine obesity homolog), leptin (obesity homolog, mouse), OB, OBS; obese protein; obesity factor; obese, mouse, homolog of; leptin (murine obesity homolog); leptin (obesity homolog, mouse); OB; OBS; FLJ94114;

Gene ID 3952

mRNA Refseq NM_000230

Protein Refseq NP_000221

 Tel: 1-631-559-9269 1-516-512-3133

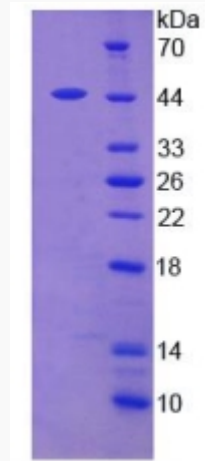
 Email: info@creative-biomart.com  Fax: 1-631-938-8127

 45-1 Ramsey Road, Shirley, NY 11967, USA

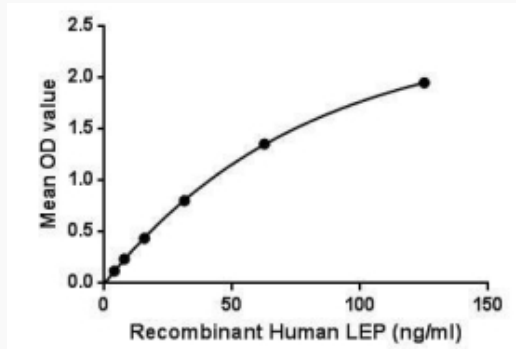
UniProt ID

P41159

SDS-PAGE



Activity



 Tel: 1-631-559-9269 1-516-512-3133

 Email: info@creative-biomart.com  Fax: 1-631-938-8127

 45-1 Ramsey Road, Shirley, NY 11967, USA