

Recombinant Human LEPR Protein (Gly310-Leu538), N-His tagged

Cat. No. LEPR-1236H Lot. No. (See product label)

SPECIFICATION

Product Overview	Recombinant Human CD295/LEPR (Gly310-Leu538) fused with the N-His tag was expressed in E. coli.
Species	Human
Source	E.coli
ProteinLength	Gly310-Leu538
Form	Lyophilized powder/frozen liquid
Molecular Mass	28.66 kDa
Purity	>90% as determined by SDS-PAGE.
Notes	For research use only.
Storage	Use a manual defrost freezer and avoid repeated freeze thaw cycles. Store at 2 to 8 centigrade for one week. Store at -20 to -80 centigrade for twelve months from the date of receipt.
Storage Buffer	0.01M PBS, pH 7.4, 0.02% NLS
Reconstitution	Reconstitute in sterile water for a stock solution.

 Tel: 1-631-559-9269 1-516-512-3133

 Email: info@creative-biomart.com  Fax: 1-631-938-8127

 45-1 Ramsey Road, Shirley, NY 11967, USA

Shipping They are shipped out with dry ice/blue ice unless customers require otherwise.

GENE INFORMATION

Gene Name LEPR leptin receptor [Homo sapiens (human)]

Official Symbol LEPR

Synonyms LEPR; leptin receptor; CD295; OBR; huB219; OB receptor; OB-R; LEP-R; DKFZp686B1731;

Gene ID 3953

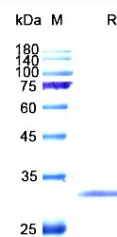
mRNA Refseq NM_001003679

Protein Refseq NP_001003679

MIM 601007

UniProt ID P48357

SDS-PAGE



 Tel: 1-631-559-9269 1-516-512-3133

 Email: info@creative-biomart.com  Fax: 1-631-938-8127

 45-1 Ramsey Road, Shirley, NY 11967, USA