

Recombinant Human LEPR protein, Fc-tagged

Cat. No. LEPR-799H Lot. No. (See product label)

SPECIFICATION

Product Overview	Recombinant Human LEPR (Phe22-Asp839) protein was fused to human IgG1 Fc tag at C-terminus and expressed in human 293 cells (HEK293).
Species	Human
Source	HEK293
ProteinLength	Phe22-Asp839
Description	<p>Leptin receptor (LEPR) is also known as LEP-R, cluster of differentiation 295 (CD295), OB-R and B219, is a single-transmembrane-domain receptor of the gp130 family of cytokine receptors. Leptin receptor exists as homodimer and binds Leptin with high affinity, thus mediates the biological function of the adipocyte-specific hormone Leptin. LEPR is a receptor for leptin (an adipocyte-specific hormone that regulates body weight), and is involved in the regulation of fat metabolism, as well as in a novel hematopoietic pathway that is required for normal lymphopoiesis. Mutations in this protein have been associated with obesity and pituitary dysfunction. Interaction of leptin and leptin receptor is crucial for body weight and bone mass regulation in mammals through hypothalamic effects on satiety and energy expenditure. Meanwhile, research data supports a leptin receptor activation model based on ligand-induced conformational changes.</p>
Predicted N Terminal	Phe22
Form	Lyophilized from 0.22

 Tel: 1-631-559-9269 1-516-512-3133

 Email: info@creative-biomart.com  Fax: 1-631-938-8127

 45-1 Ramsey Road, Shirley, NY 11967, USA

µm filtered solution in 50 mM Tris, 100 mM Glycine, pH7.5, 10% trehalose.

Molecular Mass

The protein has a calculated MW of 121 kDa. The protein migrates as 150-165 kDa under reducing (R) condition (SDS-PAGE) due to glycosylation.

Endotoxin

Less than 1.0 EU per µg by the LAL method.

Purity

>95% as determined by SDS-PAGE.

Storage

For long term storage, the product should be stored at lyophilized state at -20 centigrade or lower.

Please avoid repeated freeze-thaw cycles.

This product is stable after storage at:

-20 to -70 centigrade for 12 months in lyophilized state;

-70 centigrade for 3 months under sterile conditions after reconstitution.

Reconstitution

It is recommended that sterile water be added to the vial to prepare a stock solution of 0.2 ug/ul. Centrifuge the vial at 4°C before opening to recover the entire contents.

GENE INFORMATION

Gene Name

LEPR

Official Symbol

LEPR

Synonyms

LEPR; leptin receptor; CD295; OBR; huB219; OB receptor; OB-R; LEP-R;
DKFZp686B1731

Gene ID

3953

mRNA Refseq

NM_001003679

 Tel: 1-631-559-9269 1-516-512-3133

 Email: info@creative-biomart.com  Fax: 1-631-938-8127

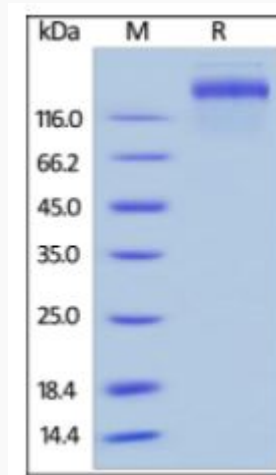
 45-1 Ramsey Road, Shirley, NY 11967, USA

Protein Refseq NP_001003679

MIM 601007

UniProt ID P48357

SDS-PAGE of LEPR-799H



Human Leptin R, Fc Tag on SDS-PAGE under reducing (R) condition. The gel was stained overnight with Coomassie Blue. The purity of the protein is greater than 95%.

Tel: 1-631-559-9269 1-516-512-3133

Email: info@creative-biomart.com Fax: 1-631-938-8127

45-1 Ramsey Road, Shirley, NY 11967, USA