

# Recombinant Bovine LGALS1 Protein (2-135 aa), His-SUMO-tagged

**Cat. No.** LGALS1-1989B    **Lot. No.** (See product label)

## SPECIFICATION

<b>Product Overview</b>	Recombinant Bovine LGALS1 Protein (2-135 aa) is produced by E. coli expression system. This protein is fused with a 6xHis-SUMO tag at the N-terminal. Research Area: Cell Biology. Protein Description: Full Length of Mature Protein.
<b>Species</b>	Bovine
<b>Source</b>	E.coli
<b>ProteinLength</b>	2-135 aa
<b>Description</b>	Lectin that binds beta-galactoside and a wide array of complex carbohydrates (PubMed:1900835, PubMed:8108426, PubMed:7773775). Plays a role in regulating apoptosis, cell proliferation and cell differentiation. Inhibits CD45 protein phosphatase activity and therefore the dephosphorylation of Lyn kinase. Strong inducer of T-cell apoptosis.
<b>Form</b>	Tris-based buffer,50% glycerol
<b>Molecular Mass</b>	30.6 kDa
<b>AA Sequence</b>	ACGLVASNLNLKPGECLRVRGEVAADAKSFLNLGKDDNNLCLHFNPRFNAHGVDN TIVCNSKDAGAWGAEQRESAFPFPQGSVVEVCISFNQTDLTIKLPDGYEFKFPNRLN LEAINYLSAGGDFKIKCVAFE

 Tel: 1-631-559-9269    1-516-512-3133

 Email: [info@creative-biomart.com](mailto:info@creative-biomart.com)     Fax: 1-631-938-8127

 45-1 Ramsey Road, Shirley, NY 11967, USA

<b>Purity</b>	> 90% as determined by SDS-PAGE.
<b>Notes</b>	Repeated freezing and thawing is not recommended. Store working aliquots at 4 centigrade for up to one week.
<b>Storage</b>	The shelf life is related to many factors, storage state, buffer ingredients, storage temperature and the stability of the protein itself. Generally, the shelf life of liquid form is 6 months at -20 centigrade/-80 centigrade. The shelf life of lyophilized form is 12 months at -20 centigrade/-80 centigrade.
<b>Concentration</b>	A hardcopy of COA with reconstitution instruction is sent along with the products.

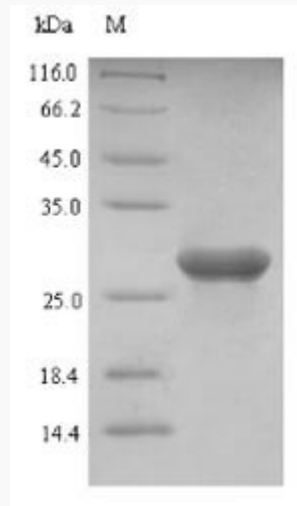
## GENE INFORMATION

<b>Gene Name</b>	LGALS1 galectin 1 [ Bos taurus (cattle) ]
<b>Official Symbol</b>	LGALS1
<b>Synonyms</b>	LGALS1;
<b>Gene ID</b>	326598
<b>mRNA Refseq</b>	NM_175782
<b>Protein Refseq</b>	NP_786976
<b>UniProt ID</b>	P11116

 Tel: 1-631-559-9269 1-516-512-3133

 Email: [info@creative-biomart.com](mailto:info@creative-biomart.com)  Fax: 1-631-938-8127

 45-1 Ramsey Road, Shirley, NY 11967, USA



(Tris-Glycine gel) Discontinuous SDS-PAGE (reduced) with 5% enrichment gel and 15% separation gel.

 Tel: 1-631-559-9269 1-516-512-3133

 Email: [info@creative-biomart.com](mailto:info@creative-biomart.com)  Fax: 1-631-938-8127

 45-1 Ramsey Road, Shirley, NY 11967, USA